

# New England HOME

CT

Celebrating Fine Design, Architecture, and Building

SUMMER  
IN  
STYLE

Light + Bright, Inside + Out

Summer 2020

\$6.95US/CAN

52



0 09281 25475 1

Display until October 19, 2020  
nehomemag.com



# ELEISH VAN BREEMS HOME

FURNITURE • ANTIQUES • LIGHTING • PILLOWS • TABLETOP • ACCESSORIES

EVB HOME 99 FRANKLIN ST, WESTPORT, CT | 14 EASY ST, NANTUCKET, MA | [EVBANTIQUES.COM](http://EVBANTIQUES.COM)

# SHOPE RENO WHARTON

ARCHITECTURE



shoperenowharton.com

T. 203.852.7250



Photography by: Robert Reno







MORGAN  
HARRISON  
HOME

DESIGN & ARCHITECTURAL  
INTERIORS

New Canaan, Connecticut  
203.594.7875  
[morganharrisonhome.com](http://morganharrisonhome.com)







**GATEHOUSEPARTNERS.COM**

203 • 532 • 9486

11 HENRY STREET, GREENWICH, CT



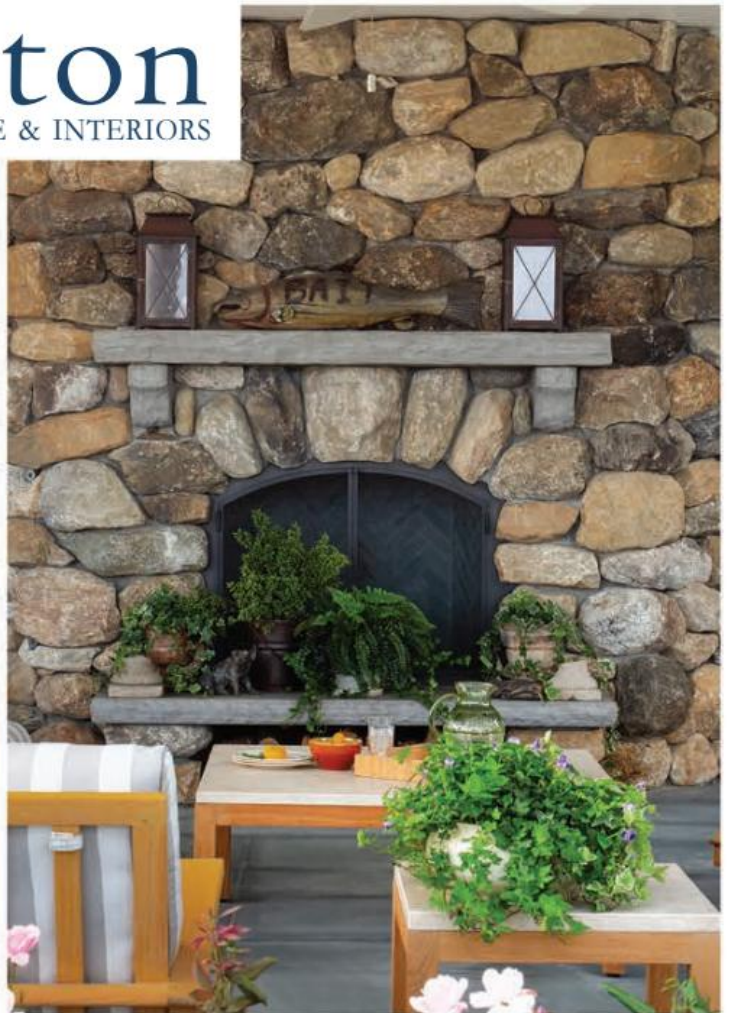
**BRINGING YOUR PLANS TO LIFE ONE HOME AT A TIME.**







Hilton  
ARCHITECTURE & INTERIORS





*Connecticut, New York,  
Rhode Island, Boston and beyond*



ARTEMIS landscape architects  
[www.artemisLA.com](http://www.artemisLA.com) • 203.683.1808

## Redefining Value



Are you ready for a new kitchen? Nukitchens is a complete kitchen renovation company, offering everything from design to installation and remodeling. We are kitchen specialists with decades of experience and know-how. Our business philosophy is simple...to help you make the best decisions with your best interest at heart. Please visit our website to learn more about us and to schedule a Showroom Tour or Virtual Consultation.



132 Water Street, South Norwalk, CT  
203-831-9000 [nukitchens.com](http://nukitchens.com)

**nu**kitchens



Raised Bed Garden Design  
and Construction

Garden Renovation

Garden Planning and Maintenance

Berry Bushes and Fruit Trees

Beekeeping

Maple Syrup Tapping

# During WWII, 40% of Americans' Vegetables Were Grown at Home

**Victory Gardens fed the nation** and families experienced the satisfaction of food grown right outside their door. Today, there's a resurgence of interest in homegrown food, driven by a commitment to healthy, organic produce and enthusiasm for all the tastes of summer.

Homefront Farmers is here to help. Unfortunately, not everyone has the time or knowledge to grow their own successfully. We're the area's leading experts in producing



homegrown, organic food. Our highly trained organic gardeners make weekly visits to ensure that your garden is as bountiful as it is beautiful. Feel free to join them to learn for yourself! If you don't have a garden yet, let us build you one of our handcrafted raised bed beauties.

There's still time to have your own Victory Garden, and enjoy all the tastes of summer. **Give us a call — we'd love to get you growing!**

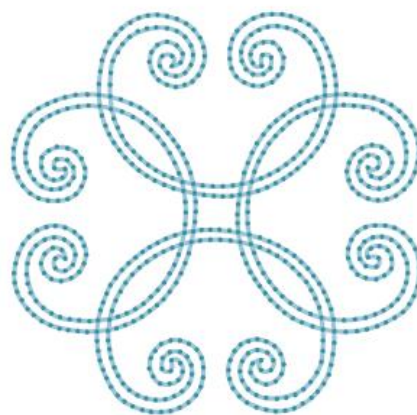


ALL PHOTOS BY NEIL LANDINO





# CREATING THE ART OF STYLISH LIVING



**CLARITY HOME**

CLARITYHOMEINTERIORS.COM | 203-340-2468

# *Imagine the Possibilities...*

This gorgeous Palladio Award-winning pool pavilion is the pinnacle of luxurious outdoor living, offering a gracious guest house and lavish setting for entertaining or relaxation.





CORNERSTONE  
CONTRACTING



[cornerstone-builders.com](http://cornerstone-builders.com)

203•861•4200  
200 Pemberwick Rd  
Greenwich, CT 06831



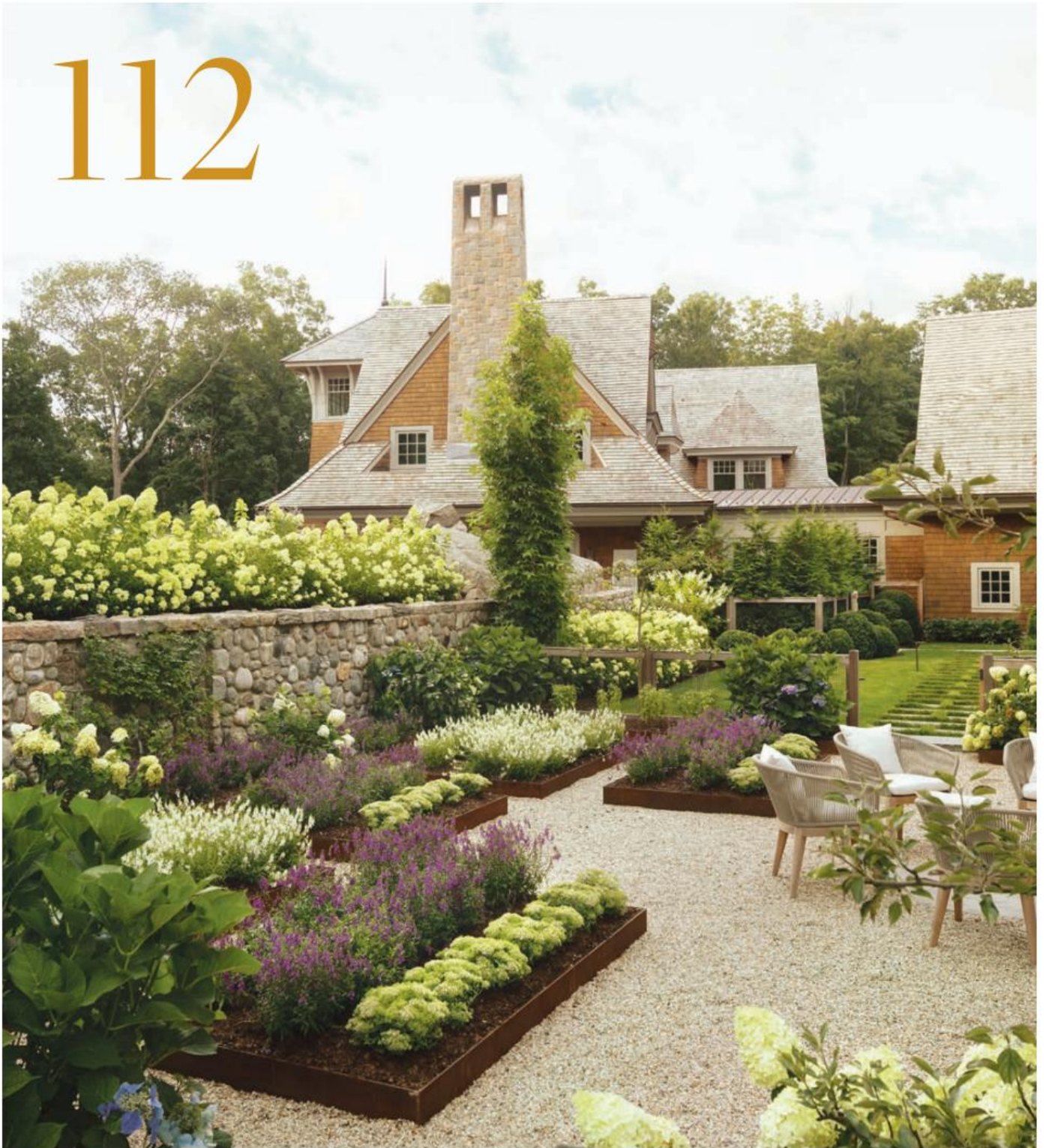
NEIL LANDING

21 Bridge Square, Westport, CT 06880  
t: 203.331.5578 f: 203.557.4321  
jan@janhiltzinteriorsllc.com  
[janhiltzinteriorsllc.com](http://janhiltzinteriorsllc.com)



JAN HILTZ  
INTERIORS LLC

# 112



## Features

### 112 Rolling with the Rocks

Outdoor settings shift from active play spaces to quiet woodlands at this ledge-filled rural retreat.

### 122 With a Twist

A modern family home in Greenwich revels in the unexpected.

### 130 Keep it Light

A dark 1940s Southport cottage gets the enlightenment it deserves—and then some.



## Here & There

### 33 Let There Be Light

Long before “stay home” became a hashtag, these four designers were remaking kitchens into havens.

### 46 Buzzworthy

This summer, the Beehive hits the shopping sweet spot.

### 52 The Power of the Pantry

Shop the perfect pantry, inspired by a Christopher Peacock project in Greenwich.

### 54 The Sweet Smell of Victory

Kitchen gardens are back. Here are the stylish supplies yours needs.

### 58 Uncharted Waters

History comes alive when a landscape merges Old Greenwich’s first house with one of its newest residences.

### 64 Timeless Treasures

Ceramicist Warner Walcott embraces global style to create clean, classic designs.

### 70 Smith on Style

Designer Lori Weitzner and artist Lisa Hunt’s new fabric and wallpaper collaboration makes its debut.

### 72 Wet Footprints Stop Here

A polished-but-playful pool suite completes a lakefront vacation home.

### 80 The Scene

A look back at a host of design-related virtual events.

### 144 Last Look

A sneak peek at *Summer to Summer: Houses by the Sea*.

## Spotlight On...

### 75 The Connecticut Chapter of the American Institute of Architects Alice Washburn Awards

## Special Marketing Section

### 87 Portfolio of Inspired Renovations



## In Every Issue

24 Editor’s Note

78 Design Dispatches

142 Resources

143 Advertiser Index



CHRISTOPHER PAGLIARO  
ARCHITECTS



203.838.5517

[CHRISTOPHERPAGLIAROARCHITECTS.COM](http://CHRISTOPHERPAGLIAROARCHITECTS.COM)

DARIEN, CT



INNERSPACE ELECTRONICS, INC.



**SERVING ALL YOUR LIGHTING NEEDS - LIGHTING DESIGN, LIGHTING FIXTURES**

**LIGHTING CONTROL SYSTEMS**

**WELLNESS SOLUTIONS— DELOS AIR PURIFICATION & WATER FILTRATION &**

**KETRA CIRCADIAN LIGHTING**

**MOTORIZED WINDOW TREATMENTS | SOPHISTICATED HOME AUTOMATION**

**ENVIRONMENT CONTROLS | SECURED HOME NETWORKS**

**SURVEILLANCE | OUTDOOR AUDIO/VIDEO SYSTEMS**

**InnerSpace Electronics, Inc. | 45 Kensico Drive, Mount Kisco, NY 10549 |(914) 937-9700**





Make an appointment today. Call 203-864-4060  
Visit our website @ [www.A-ListDesignllc.com](http://www.A-ListDesignllc.com)

*Skilled in Beautiful Safety!*



# Welcome



Over the past few months, my family's new routine has taken shape and, not surprisingly, it's firmly rooted in our kitchen. I'm thankful for the morning light as we three gather over breakfast and discuss the day ahead. We'll meet again at lunchtime, my husband and I both surfacing from home offices to join our young daughter for a meal and a story or two.

Without fail, snack time beckons promptly at 3 p.m. My husband, our grocery shopper, has taken his snack game to new heights and stashes provisions in our utility-turned-auxiliary food-storage closet. (In our 100-year-old house, this is a hastily closed-off butler's pantry, the original built-in shelves and drawers now stuffed with bulk food and supplies.) On particularly long afternoons, he'll present an indulgent snack with flourish, and the last few hours of the workday fly by.

Back in the kitchen again in the evening, I'll scroll recipe apps, summoning the energy to prepare dinner. Finally, we both circle the counters and dishwasher before bed as we sleepily tidy the kitchen for the next day.

Readers, the events of 2020—and the pages of this issue—have shaped my dream kitchen.

It will have a statement ceiling (page 33) and a prep sink. Cubbyholes for servingware are a must, as is a wall of windows (page 40) that overlook my vegetable garden (page 54). In addition to hooks for everything (page 36), the pantry will offer storage and attractively display all those aforementioned snacks at a glance (page 52). And I know just who to call....

JENNA TALBOTT

*@jennatalbott*

## In Print

To subscribe to the magazine or to inquire about back issues, call 800-765-1225

## Online

Explore luxury home design professionals, inspiration, and resources at [nehomemag.com](http://nehomemag.com)

## Newsletter

Sign up for our weekly curated home and style updates at [nehomemag.com/newsletters](http://nehomemag.com/newsletters)

## Social Media

Interact with us at [@nehomemagazine](https://www.instagram.com/nehomemagazine) on Instagram + Pinterest + Facebook



**FAMILY COMPANIES**

STONE & LANDSCAPE SUPPLIES

Exceptional Products, Personal Service

WESTPORT SHOWROOM

**203.227.5181**

BETHEL SHOWROOM

**203.790.9023**

**[gaultstone.com](http://gaultstone.com)**





  
**Closet &  
Storage  
Concepts®**

MAKE ROOM  
FOR *Life*

1-888-THE-CLOSET  
closetandstorageconcepts.com/norwalk



New England  
**HOME**®

nehomemag.com

Editor in Chief

**Jenna Talbott**

jtalbott@nehomemag.com

Editor at Large

**Clinton Smith**

csmith@nehomemag.com

Creative Director

**Robert Lesser**

rlesser@nehomemag.com

Managing Editor

**Erika Ayn Finch**

efinch@nehomemag.com

Market Editor

**Lynda Simonton**

lsimonton@nehomemag.com

Copy Editor

**Lisa H. Speidel**

lspeidel@nehomemag.com

Senior Contributing Editor

**Paula M. Bodah**

Contributing Editors

**Karin Lidbeck Brent**

klidbeck@nehomemag.com

**Stacy Kunstel**

skunstel@nehomemag.com

**Kaitlin Madden**

kmadden@nehomemag.com

**Contributing Writers**

David Corriveau, Marni Elyse Katz, Larry Lindner, Tovah Martin, Meaghan O'Neill

**Contributing Photographers**

Jane Beiles, Robert Benson, Jorge Gonzalez-Guillot, Neil Landino, ModernFotographic, Laura Moss, Phil Nelson, Michael Partenio, Marlene Pixley, Durston Saylor

♦ ♦ ♦

**Editorial Submissions**

Designers, architects, builders, and homeowners are invited to submit projects for editorial consideration. For information about submitting projects, e-mail edit@nehomemag.com.

**Letters to the Editor**

We'd love to hear from you! Write to us at the above address, fax us at 617-663-6377, or e-mail us at letters@nehomemag.com.

**Upcoming Events**

Are you planning an event that we can feature in our calendar of events? E-mail information to calendar@nehomemag.com, or mail to Calendar Editor, New England Home, 530 Harrison Ave., Suite 302, Boston, MA 02118.

**Parties**

We welcome photographs from design- or architecture-related parties. Send high-resolution photos with information about the party and the people pictured to eediger@nehomemag.com.

♦ ♦ ♦

**Subscriptions**

To subscribe to New England Home Connecticut (\$15.95 for one year) or for customer service, call 800-765-1225 or visit our website, nehomemag.com.



# MAR SILVER

ARCHITECTURE | INTERIOR | ART | DESIGN | OBJECTS

[MARSILVERDESIGN.COM](http://MARSILVERDESIGN.COM)



**NEIL HAUCK ARCHITECTS**



859 Post Road Darien, CT 06820  
 203-655-9340  
 www.neilhauckarchitects.com



Publisher  
**Kathy Bush-Dutton**  
 kbushdutton@nehomemag.com

Associate Publisher,  
 New England Home Connecticut  
**Roberta Thomas Mancuso**  
 rmancuso@nehomemag.com

Executive Sales Manager  
**Jill Korff**  
 jkorff@nehomemag.com

Sales Managers  
**Kim Sansoucy**  
 ksansoucy@nehomemag.com

Marketing Designer  
**Jared Ainscough**  
 jainscough@nehomemag.com

Production Manager  
**Glenn Sadin**  
 gsadin@nehomemag.com

Marketing Coordinator  
**Emily Ediger**  
 eediger@nehomemag.com



**Subscriptions**  
 To subscribe to New England Home (\$19.95 for one year) or for customer service, call 800-765-1225 or visit our website, nehomemag.com.

**Advertising Information**  
 To receive information about advertising in New England Home, please contact us at 800-609-5154, ext. 713, or info@nehomemag.com.

Editorial and Advertising Office  
 530 Harrison Ave., Suite 302  
 Boston, MA 02118  
 617-938-3991, 800-609-5154



**New England Home Magazine, LLC**

Managing Partners  
**Adam Japko, Chris Legg**

Finance Manager  
**Kiyomi DeBay**  
 kdebay@nehomemag.com

Circulation Manager  
**Kurt Coey**

Newsstand Manager  
**Bob Moenster**





# **TORRICO**

## **BATH & KITCHEN SHOWROOM**

Now more than ever, we realize our homes are our sanctuaries.  
Let us help you make yours beautiful, comfortable and functional.  
We're now open for in-person and virtual appointments.

*Since 1917* ■ [www.TorrcoDesignCenter.com](http://www.TorrcoDesignCenter.com) ■ 203.479.6935  
Danbury ■ East Windsor ■ Fairfield ■ New Haven ■ Stamford ■ Waterbury

# THE FUTURE IS IN THE DETAILS.



## Stamford's Most Complete Showroom for Design Professionals

*ProSource offers a dedicated team of experts and private showrooms with the largest selection of home and commercial products at wholesale prices.*

This one-of-a-kind combination supports our strong relationships with the most talented designers in the business.

With convenient one-stop shopping, ProSource provides everything you need to create a stunning and functional living or work space that your clients will love.

Find out why so many have come to trust the unique solution ProSource offers.  
[www.prosourcewholesale.com/stamford](http://www.prosourcewholesale.com/stamford)



Cabinets | Countertops | Sinks | Faucets | Cabinet Hardware | And More

**ProSource**<sup>®</sup>  
**WHOLESALE**  
Products & Pros for Home & Commercial Projects

**ProSource of Stamford**  
25 Harbor View Avenue | Stamford, CT 06902  
203-602-0607  
[www.prosourcewholesale.com/stamford](http://www.prosourcewholesale.com/stamford)





Handcrafted in New Hampshire

Custom cabinetry  
for every room in your home



800-999-4994 • [www.crown-point.com](http://www.crown-point.com)

Available direct, nationwide

Work with one of our  
in-house design professionals

MATTHEW R. DOUGHERTY  
ARCHITECT, LLC



NEIL LANDING



NEW CANAAN, CT

203.296.4669

MRDARCHITECT.COM

# Here & There

DESIGN DISCOVERIES FROM AROUND NEW ENGLAND



## LET THERE BE LIGHT

Long before “stay home” became a hashtag, these four designers were remaking kitchens into havens.

TEXT BY DAVID CORRIVEAU

The new kitchen island boasts seating for five at Palecek bar stools perched beneath pendants from Hudson Valley Lighting.

**TOP TO BOTTOM:** Black quartzite with blue veining tops the island at the kitchen's center, offering both casual seating and a sink for meal preparation. In addition to white-painted cabinetry, which replaced a set of dark mahogany cabinets, a glass backsplash under the kitchen's lone window enhances the natural light. A pantry provides a fourth sink and additional storage.



**INTERIOR DESIGN:**  
Rebecca Reynolds,  
Rebecca Reynolds  
Design/New Canaan  
Kitchens

**BUILDER:**  
Seri Bueti, Bueti  
Construction

**PHOTOGRAPHY:**  
Laura Moss

**STYLIST:**  
Karin Lidbeck Brent

## Country Comfort

To transform a Greenwich kitchen's atmosphere from outdated, dark, and gloomy to bright and welcoming, designer Rebecca Reynolds started by banishing the mahogany cabinets.

And to further enhance the natural light from the kitchen's only window, Reynolds commissioned a backsplash of tiny glass tiles over the new Galley sink and a quartzite countertop. "When the light hits them," she says, "they really twinkle."

The additional natural light from the window also shows off the new center island, topped with black-and blue-veined quartzite and sport-

ing its own prep sink and seating for five. And a new sixty-inch-wide range and hood on the wall to its left vents cooking odors more efficiently and quietly.

Until the family recently sold the house, the mom enjoyed using the efficient kitchen to cook for her husband and their three teen boys—a detail that caught the eyes of would-be buyers.

"As important as it was to make it a place where these people could be together," Reynolds says, "we also needed to make it something where new people would walk in and say, 'Oh my God! I've got to have this house!'"





BUILD YOUR LEGACY



LEGACY CONSTRUCTION  
NORTHEAST LLC

Custom Homes | Renovations | Home Maintenance | Sustainability  
Westchester | Fairfield County | New York City | Hamptons

914-273-4511 | [info@legacydevelopmentllc.com](mailto:info@legacydevelopmentllc.com) | [www.legacydevelopmentllc.com](http://www.legacydevelopmentllc.com)



**LEFT:** In addition to the main sink and seating, the Giotto quartzite-topped center island shelters an extra Wolf oven at the far end. **BELOW:** The kitchen's array of cooking stations includes a discrete space for baking, with storage for tools and shelves for bowls, cookbooks, and dry goods.

## Station to Station

In this 6,000-square-foot New Canaan house, four kids—ranging from early teens to college age—orbited, awkwardly, around a relatively dark, tight space. Designer-architect-builder Kristina Larson recalls that the room “was almost operating as a galley kitchen.” It had seven barstools around a narrow island and no other eating space other than the formal dining room. Which would work, except that the kids usually “have ten friends with them,” Larson adds. Relatives also visit regularly.

Larson and her team replaced a window with a French door that leads directly to the patio where the family dines alfresco. They also created a breakfast nook adjacent to the main kitchen’s baking “station,” which is anchored by a wall devoted to shelving for ingredients and cookbooks. Nearby, a custom cabinet is topped with a professional-grade mixer.

In drawers on the side of the new center island facing the cabinet, the mom stores mixing bowls, pans for



muffins and loaves, and baking sheets. The island also houses the main sink, a microwave, four stools, and a stove for projects that don’t require firing up the Lacanche range. “It’s a safe haven for all the kids,” Larson concludes. “All my clients are really home-centered. Home as in heart.”

**ARCHITECTURE:** Ken Andersen, Granoff Architects  
**INTERIOR DESIGN, KITCHEN DESIGN, BUILDER:** Kristina Larson  
**INTERIOR MILLWORK:** Carlos Valladares, Valladares Carpentry  
**CABINETS:** Greenfield Cabinetry  
**PHOTOGRAPHY:** Jane Beiles

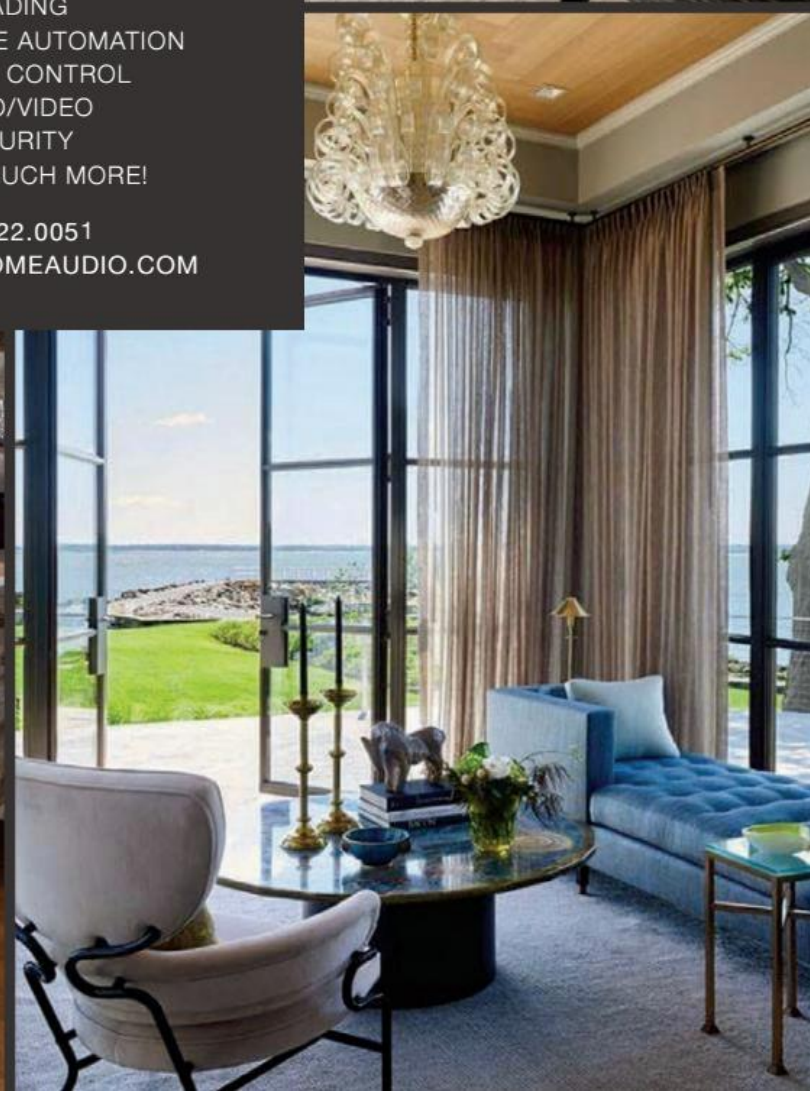


 **ADVANCEDHOMEAUDIO**

EXPERIENCE ALL THE  
BENEFITS OF CUSTOMIZED  
TECHNOLOGY SOLUTIONS FOR  
YOUR HOME OR BUSINESS.

LED LIGHTING  
SHADING  
SMART HOME AUTOMATION  
CLIMATE CONTROL  
AUDIO/VIDEO  
SECURITY  
AND SO MUCH MORE!

203.922.0051  
[ADVANCEDHOMEAUDIO.COM](http://ADVANCEDHOMEAUDIO.COM)



**ARCHITECTURE:** Teo Siguenza

**INTERIOR DESIGN:** Emily Fuhrman, Sage & Ginger

**BUILDER:** Matos Andrade, Andrade Construction

**CABINETS:** Minzner and Company

**PHOTOGRAPHY:** Jane Beiles



**ABOVE:** A twelve-foot skylight illuminates an island topped with porous concrete, while a painting by Colombian-born artist Alexis Duque accents the gas fireplace. **BELOW:** Homeowner and interior designer Emily Fuhrman approaches the cooking counter, which is clad in gray- and green-veined marble.



## Customer (Self-) Satisfaction

To redo the cooking and dining areas of her own New Canaan home, veteran designer Emily Fuhrman cut out the middle (wo)man and assigned herself.

First, she set her sights on the 225-square-foot kitchen in which her husband and their two daughters were “tripping all over each other,” Fuhrman recalls. After knocking down walls separating that space from a dark dining room, she installed a twelve-by-four-foot skylight in the latter, and painted the new kitchen’s walls white.

Then Fuhrman went against the grain of “the many classic, traditional, colonial, white kitchens

I’ve done” for clients, applying an ebonized finish to the streamlined, hardware-free cabinetry and to the cubbyholes framing the top and the right side of the refrigerator. “The cubbies may be one of my favorite features,” she says. “I wanted people to walk in and have it feel like a room.”

In addition to the center island, the main space includes two bar areas. An adjacent room, with table and chairs, offers what Fuhrman calls “the feeling of a chef’s table in a restaurant where you can enjoy a meal with a group, have a little privacy but still a good view of the kitchen action if you are interested.”





# BROOKS & FALOTICO ASSOCIATES

199 ELM ST. NEW CANAAN, CT

203.966.8440

214 BRAZILIAN AVE. PALM BEACH, FL

[WWW.BROOKSANDFALOTICO.COM](http://WWW.BROOKSANDFALOTICO.COM)

CONNECTICUT • CAPE COD • MARTHA'S VINEYARD • NANTUCKET • RHODE ISLAND • JUPITER ISLAND  
KIWAH ISLAND • SAVANNAH • BERMUDA • PALM BEACH • ASPEN • MONTANA • JACKSON HOLE

*PHOTO BY JENNIFER HOLT*



A wall of windows above the sink brings light to a space formerly dominated by cabinetry.

## Generational Shift

Something had to go in order to illuminate the space where the couple, their four children, and the wife's recently widowed ninety-year-old mother would spend the most time together.

So, architect and interior designer Stacy Millman removed the wall between the kitchen and the dining room of the otherwise sturdy West Hartford home built before the Great Depression, and replaced the wall

**ARCHITECTURE AND INTERIOR**

**DESIGN:** Stacy Millman, SKM Design

**BUILDER:** Bruce Daigle, Daigle and Son

**CABINETS:** Heartwood Cabinetry

**PHOTOGRAPHY:** Jane Beiles



Architecture: Charles Hilton Architects  
Photography: Robert Benson



**HOBBS, INC.**

**DISTINCTIVE HOMES, ADDITIONS & RENOVATIONS**  
CONNECTICUT • NEW YORK • NEW JERSEY

203.966.0726

[www.hobbsinc.com](http://www.hobbsinc.com)



facing the backyard. On the latter, she installed a parade of four windows above the new sink.

“The client wanted something different from what we usually have in New England,” Millman recalls. “And she didn’t want everybody’s white kitchen.”

To get the desired effect, the designer and client “went through forty stain colors” before settling on a grayish-blue-beige mix, which allows the warmth of the walnut cabinetry to shine through. The underside of the island received the same treatment. Today, that island is where the action is.

“It can be really elegant for a dinner party, and it can be a communal space, whether the parents are doing work there, the kids are doing schoolwork, the grandmother’s there with her caretaker, or [the mom] is cooking three meals a day,” says Millman. “It serves everybody.”

**EDITOR’S NOTE:** For details about these projects, see Resources.



**ABOVE:** The kitchen now offers unobstructed views of the backyard; the Blanco faucet provides even more visual interest. **LEFT:** Grayish-blue walnut cabinets frame a Wolf range and a Vent-A-Hood.



## Your Staycation Shopping List:

- ✓ Outdoor TV
- ✓ Outdoor WiFi
- ✓ Outdoor Music
- ✓ Outdoor Cameras
- ✓ Outdoor Kitchen
- ✓ Outdoor Cabana
- ✓ Outdoor Fireplace
- ✓ Outdoor Lighting



Visit our outdoor showroom:  
422 Main Street,  
Durham, CT

 **TORRISON**  
**STONE & GARDEN**  
*Your Connection To Outdoor Living*

Torrison Stone & Garden  
Hardscape & Landscape  
(860) 349-0119  
info@torrisonstone.com

**RLI ELECTRIC LLC**

LANDSCAPE LIGHTING • ELECTRIC SERVICES

RLI Electric  
Landscape Lighting  
(860) 349-8855  
bob@rlielectric.com

**HOMETRONICS**  
*Smart Home Living Through Technology* *Lifestyles*

Hometronics  
Home Technology  
(203) 234-9975  
jim@hometronicslifestyles.com



WESTPHALEN PHOTOGRAPHY

[www.wagnerhodgson.com](http://www.wagnerhodgson.com)

ny 518.567.1791

vt 802.864.0010

**The First Thing  
We Build Is Trust**



**S&W BUILDING  
REMODELING, INC.**

18 REYNOLDS STREET  
NORWALK, CT | (203) 831-8300  
[WWW.SWBUILDINGREMODELING.COM](http://WWW.SWBUILDINGREMODELING.COM)





Thoughtful Design  
Meticulously Crafted  
Seamlessly Delivered

*Celebrating*  
**25** yrs.  
*in design*

REBECCA REYNOLDS DESIGN

203-972-8300

[rebeccareynoldsdesign.com](http://rebeccareynoldsdesign.com)

[rebeccareynoldsdesign@gmail.com](mailto:rebeccareynoldsdesign@gmail.com)

# Buzzworthy

This summer, the Beehive hits the shopping sweet spot. BY LYNDA SIMONTON

**A**fter spending the spring working, schooling, and eating three meals a day at home, it just may be time for a palate cleanser. Cue the Beehive.

Friends Sandra Halstead and Lesley Collins own the bright and airy shop, and their lively personalities and style can be seen in each carefully selected item. In the days of Instagram and Amazon, the partners are committed to regularly traveling to markets and tradeshow in order to stay abreast of trends and see goods firsthand. The result is a mix of products that are uniquely “Beehive.”



**ABOVE:** Sandra Halstead and Lesley Collins became partners in 2018 when the Beehive reopened in its new, expanded location. **LEFT:** The shop is constantly refreshing its entertaining essentials, making it a must-visit destination before hosting a soiree.



This summer, the shop’s offerings feature the duo’s signature blue-and-white palette mixed with a heavy dose of rattan and other natural-fiber accents. Overscale, waist-high lanterns mingle with piles of baskets, bright pillows, and statement lighting.

It is no surprise that loyal customers who appreciate the shop’s stylish, family-friendly design aesthetic have morphed into interior design clients. “Customers have the ability to work with the design team to special-order select





# Reflect your personality. Exquisitely.

Our Crosswater London collection combines inspired design and meticulous craftsmanship to create a bath space that will take your breath away. From vanities and tubs to faucets you'll find a total bath solution that's distinctively you. Join the many craftsmen and women who come to Bender to create their next masterpiece.

Experience the entire curated collection at a Bender Showroom near you.



[bendershowrooms.com](http://bendershowrooms.com) | 203.498.5182

decorative plumbing | kitchen & bath cabinetry | lighting | tile & stone

Bender showrooms are open to all by appointment only. Please call or go online to schedule.

© 2020 Bender Plumbing

*REPEAT CUSTOMERS VISIT FOR THE VARIETY OF GIFTS AND ACCESSORIES THAT CHANGE WITH THE SEASONS.*



**CLOCKWISE FROM ABOVE:** Halstead and Collins strive to showcase a fresh mix of seasonal products, and in the summer it's all about easy entertaining, whether at home or at the beach. A couch and pillows are ready to take home or to serve as inspiration for custom orders. Cheese knives by Laguiole mix with other gift items in the shop's favored blue-and-white palette. Sea salt candles by Kalastyle are paired with cocktail napkins and bottle openers with an anchor motif.



pieces, but we sell many items right off the floor, so people can take them home that day," says Collins. The shop's on-site studio allows clients to easily work one-on-one with a designer.

While the Beehive has the ability to help you overhaul your house from top to bottom, repeat customers visit for the variety of gifts and accessories that change with the seasons. The boutique hosts a fully stocked "candle bar" (yes, that's a thing), while a zone dedicated to resort-style beachwear features woven bags, Turkish towels, beach totes, and even TKEES flip-flops.

What's next for the Beehive team? Halstead and Collins are outfitting a Sprinter van for mobile styling. "During the pandemic, we realized we can bring the Beehive and design services to our everyday customers in their home," says Halstead. "Maybe they aren't looking to invest in refurbishing their home or a big renovation but are looking to give it a really great update that we can accomplish for them in just a few hours." Sign us up!

*Beehive, Fairfield, thebeehivefairfield.com*





# Your kitchen's new center of attention.

Here's a great idea for your kitchen: a super-functional, smart, stylish workstation to prepare, serve and entertain family or friends. With The Galley, even cleaning up is fun. It's one more reason why the top craftsmen and women count on Bender to cook up something special.

Available only at our Norwalk location.



**BENDER**

**THE GALLEY**  
REINVENT YOUR KITCHEN

[bendershowrooms.com](http://bendershowrooms.com) | 203.498.5182

decorative plumbing | kitchen & bath cabinetry | lighting | tile & stone

Bender showrooms are open to all by appointment only. Please call or go online to schedule.

© 2020 Bender Plumbing

# THE 87<sup>TH</sup> ANNUAL CRAFTSMEN'S FAIR

**Our 87 Year Tradition is Going Virtual!**

*See what we are creating!*

**August 1-9, 2020**

**NHCRAFTS.ORG**



- Shop fine craft by your favorite artists
- Online demonstrations
- Workshops led by craftsmen
- Virtual Exhibition tour

*League of N.H. Craftsmen*  signature of excellence

  
New Hampshire  
LIVE FREE  
VISITNH.GOV

**Want  
More?**



Subscribe to *New England Home's* weekly newsletter and receive design inspiration, industry trends, and the latest local events right to your inbox.

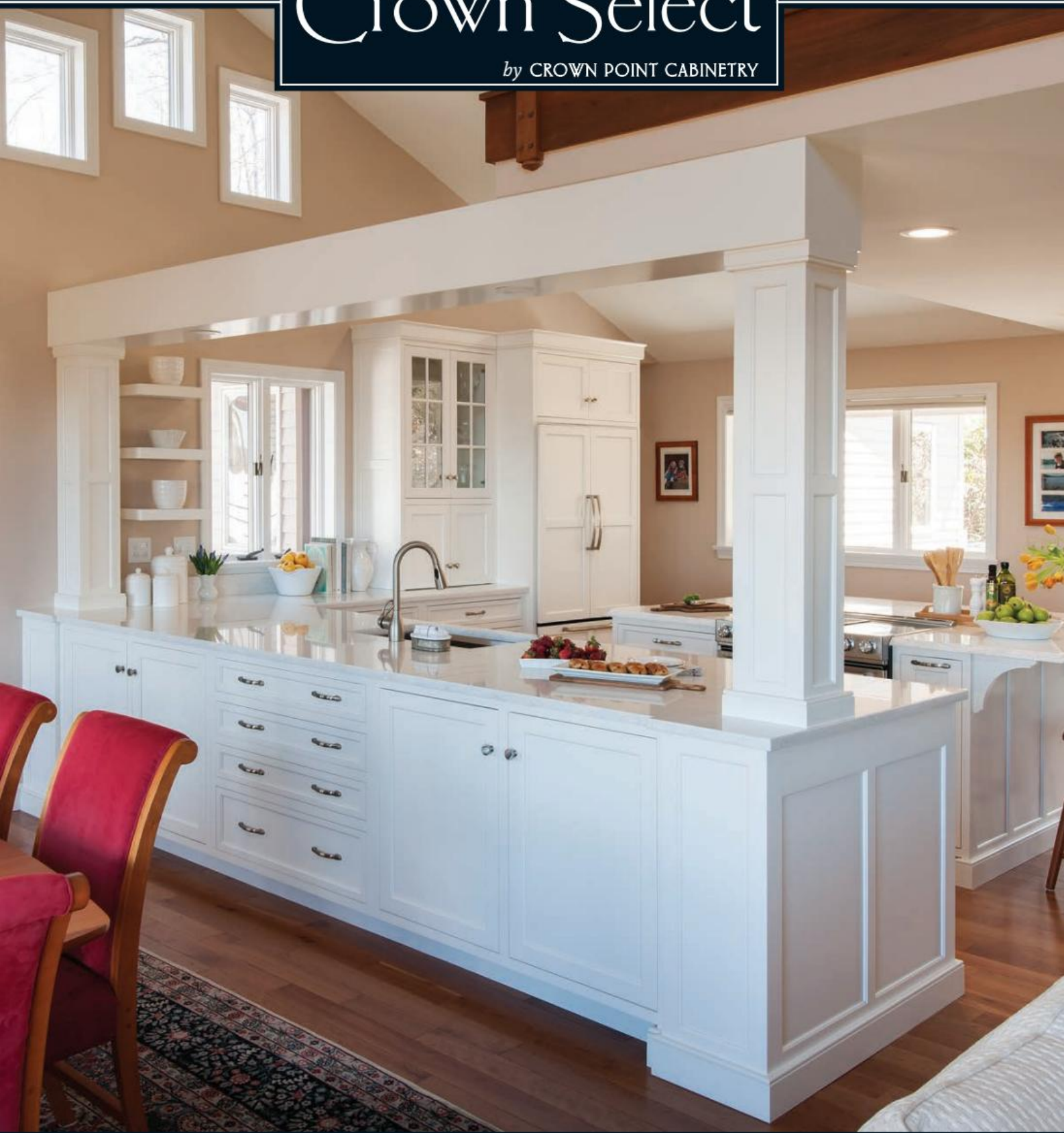
**Subscribe at  
nehomemag.com**

New England  
**HOME**



# Crown Select

by CROWN POINT CABINETRY



A whole new line of custom built inset cabinetry with the impeccable Crown Point fit and finish.

Handcrafted in New Hampshire and available direct, nationwide

[www.crownselect.com](http://www.crownselect.com)

603 • 542 • 3399

Beautifully designed and engineered to be budget friendly

Available only from Crown Point Cabinetry

PRODUCED BY LYNDA SIMONTON



INSPIRED FINDS



Bedford Tray, \$228; Serena & Lily, Westport, [serenaandlily.com](http://serenaandlily.com)



Bare Lidded Vessels, \$160–\$200; DBO Home, Sharon, [dbohome.com](http://dbohome.com)

THE POWER OF THE PANTRY

For Christopher Peacock’s design-savvy and hyper-organized client, a functional and beautiful pantry was a must-have for her Greenwich kitchen renovation. So, instead of tucking it away from the fray, the Christopher Peacock team designed a broad-yet-shallow supply pantry that allows for maximum visibility when the sliding doors are open. The homeowner embraced the KonMari Method by adding a stylish mix of jars and baskets—all labeled to meet her needs.



Minimalist Pantry Labels, \$12–\$40; Paper and Pear, [paperandpear.com](http://paperandpear.com)



Guzzini White Italian Pantry Bins, \$12.99–\$17.99; The Container Store, [containerstore.com](http://containerstore.com)

Classic 35 Korbo Handmade Wire Basket, \$200; Design Within Reach, Westport, [dwr.com](http://dwr.com)



Silo Crocks by Farmhouse Pottery, \$46–\$225; Kerri Rosenthal, Westport, [kerrirosenthal.com](http://kerrirosenthal.com)



Yamazaki Tosca White Dual-Handle Storage Basket, \$35; Crate & Barrel, Westport, [crateandbarrel.com](http://crateandbarrel.com)



Onion Baskets, set of 2, \$29.95; Williams Sonoma, Westport, Danbury, [williams-sonoma.com](http://williams-sonoma.com)



Glass Slant Jar with Matte Black Lid, \$14.99; The Container Store, [containerstore.com](http://containerstore.com)



Tyler Square Basket with Rope Handle Low, \$89.95; Crate & Barrel, Westport, [crateandbarrel.com](http://crateandbarrel.com)



# YOUR DESIGN VISION, UNCOMPROMISED



**BUY**  
*Eligible Cooking Package  
(Oven & Cooktop)*



**GET**  
*Free Dishwasher  
(Emerald®)*



**ADD**  
*Refrigeration and get  
Ventilation*

## *Remodel and save with the Gift With Purchase Program*

The space you gather in most should have a warm ambiance and a cohesive feel, with the Gift With Purchase Program you can save over **\$8,777** when selecting appliances that harmonize your interior. Simply purchase an eligible cooking package and receive a free dishwasher of your choice.

**COUNTY**  
TV & APPLIANCE

Just Smarter

SALES | SERVICE | INSTALLATION | CONCIERGE SUPPORT | BUILDER PROGRAMS

2770 SUMMER ST. STAMFORD, CT 06905 | [WWW.COUNTYTV.COM](http://WWW.COUNTYTV.COM)

[THERMADOR.COM/GIFTWITHPURCHASE](http://THERMADOR.COM/GIFTWITHPURCHASE)

©2020 BSH HOME APPLIANCES CORPORATION. ALL RIGHTS RESERVED

\*Promotion valid only on select thermador models. To be eligible for the free appliances offered in this promotion, all other appliances must be purchased at their regular price, in one order, and at the same time. Products must be purchased and delivered during the promotion period of April 1, 2020 through December 31, 2020. No substitutions will be allowed. Please see sales associate for complete details.



INSPIRED FINDS



Vintage Garden Obelisks, \$1,440; Fleur De Lis Antiques and Design, West Redding, [fleurdelisct.com](http://fleurdelisct.com)



Haws Watering Can, \$78; Terrain, Westport, [shopterrain.com](http://shopterrain.com)

THE SWEET SMELL OF VICTORY

Victory gardens, like the one above from Haver & Skolnick Architects, are back in fashion. Also known as kitchen gardens, these home vegetable patches were encouraged during World War I and II, when people grew their own produce to free up food for the war effort. Today, would-be green thumbs are experimenting with vegetable cultivation via container gardening, while more experienced gardeners are building raised beds, nurturing orchards, and hatching ambitious plans for self-sufficiency. Regardless of which path you're on, these stylish supplies will keep you motivated.



White Cedar Raised Beds, \$100-\$199; White Flower Farm, Litchfield, [whiteflowerfarm.com](http://whiteflowerfarm.com)

Botanical Interests Seeds, \$1.99; Gilbert's Garden Center, Westport, [gilbertsorganics.com](http://gilbertsorganics.com)



Brass Herb Garden Markers, set of 4, \$69; White Flower Farm, Litchfield, [whiteflowerfarm.com](http://whiteflowerfarm.com)



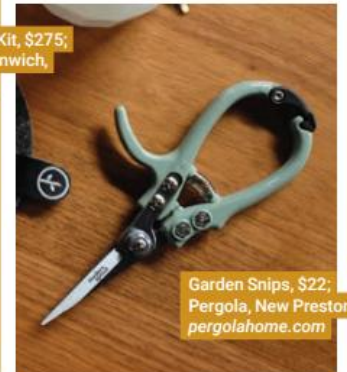
Willow Twig Border Fence, set of 4, \$68; Terrain, Westport, [shopterrain.com](http://shopterrain.com)



Tapered Farmer's Pots by Campania International, \$25-\$45; Oliver Nurseries, Fairfield, [olivenurseries.com](http://olivenurseries.com)



Garden Starter Kit, \$275; McArdle's, Greenwich, [mcardles.com](http://mcardles.com)



Garden Snips, \$22; Pergola, New Preston, [pergolahome.com](http://pergolahome.com)



# Remarkable Homes for Remarkable People



Custom-Designed & Fabricated for 70 Years



Acorn  
Deck House  
Company

800.727.3325 | [AcornDeckHouse.Com](http://AcornDeckHouse.Com)

# NEW DATE!

CELEBRATE NEW ENGLAND'S  
FINEST EMERGING DESIGN TALENT

## NOVEMBER 5TH

#NEH5UNDER40

Join us to honor the winners of the eleventh annual 5 Under 40 Awards. Raise a glass to exceptional design at the season's best cocktail party, and bid on five one-of-a-kind rugs designed by the winners as they are auctioned off for a great cause. All auction proceeds will go to Barakat, a charity that strengthens education and literacy in Central and South Asia.

The Galleria at 333 Stuart Street, Boston  
Event Starts at 6:00 p.m.  
Tickets on sale in September  
[nehomemag.com](http://nehomemag.com)



**JESSIE CARROLL**  
Architecture



**EMILY PINNEY**  
Interior Design



**STEPHANIE KING**  
Interior Design



**ALINA WOLHARDT**  
Interior Design



**ELIZABETH HENDRICKSON**  
Landscape Design

New England Home's

# 40

---

# 5 UNDER FORTY

## AWARDS

PRESENTING SPONSOR

**Landry & Arcari**  
RUGS AND CARPETING

SIGNATURE SPONSORS

**HUTKER**  
ARCHITECTS



BOSTON DESIGN  
CENTER

 **FBN Construction**

GREGORY LOMBARDI DESIGN  
*Landscape Architecture*

PHOTOGRAPHY  
SPONSOR

*Karastan*

AWARD  
SPONSOR

**W**

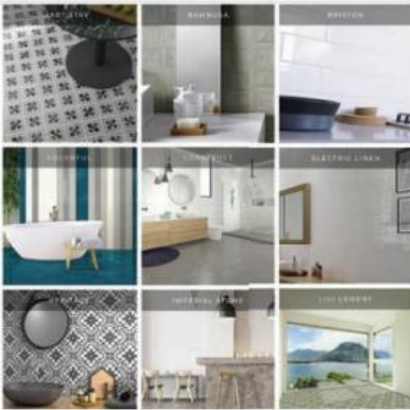
WOODMEISTER MASTER BUILDERS

TREAT-TO-GO SPONSOR

**INSTALLATIONS PLUS**

*Explore*

tileamerica.com



*Visualize*

see it on your floor



*Collaborate*

with a design associate



A Connecticut family business for over 50 years | Complimentary Design Service

BROOKFIELD | FAIRFIELD | MANCHESTER | NEW HAVEN | NEW LONDON | STAMFORD | WEST HARTFORD



ROBERT SHERWOOD LANDSCAPE ARCHITECT

WWW.ROBERTMSHERWOOD.COM 203.798.1547

# Uncharted Waters

History comes alive when a landscape merges Old Greenwich's first house with one of its newest residences. BY TOVAH MARTIN

**M**artin Waters always wanted to build a home from scratch. Since moving to Old Greenwich sixteen years ago with his wife, Anna, he tackled several renovation projects, but he never found the opportunity to indulge his lifelong fantasy of building a new house. That changed in 2014 when the Waters found a half-acre parcel with ocean views. "It's the perfect place to live," he sums up the allure. Although the saddest structure was standing



**ABOVE:** Landscape designer Rosalia Sanni chose herbs such as yarrow, salvia, and catmint to front the original house while a smart yew hedge accents the new construction. **LEFT:** For a shaded stroll garden, Sanni went with modern-but-serene hydrangeas, hostas, daylilies, and astilbe accompanying the informal stone path.

on it, Waters figured the eyesore would be an easy teardown.

The demolition sign was up for only hours before the phone calls came in. Apparently, the Waters had just bought an important historic house. The precise age of the Feake-Ferris House was unknown until historians began carbon dating the wood beams to discover that the couple had purchased the oldest house in Greenwich. The Waters morphed immediately into preservation mode with help from the Greenwich Point Conservancy.

The nonprofit had good reason for interest in the property. Originally bought by Elizabeth Winthrop Feake in 1645, it was a rare example

# FLETCHER

ESTATE CARE MANAGEMENT

FAIRFIELD COUNTY / WESTCHESTER COUNTY / HAMPTONS



## COMPREHENSIVE HOME AND PROPERTY SERVICES DESIGNED AROUND YOUR LIFESTYLE

Whether you've just built your dream home or are looking for a superior service provider to care for your weekend retreat, Fletcher Estate Care is the trusted solution for all your estate needs and requisites. Serving the Tri-State and Southern New England, including the Hamptons, our proactive program is thoughtfully designed to address year-round maintenance of all property elements, including exteriors, interiors, mechanical systems, and much more.

Our unique approach focuses on the individuality of each property and personal preferences of each client to ensure the highest level of property continuity.

320 POST ROAD / DARIEN, CT 06820

(203) 286-6166 / [FLETCHERDEVELOPMENTLLC.COM](http://FLETCHERDEVELOPMENTLLC.COM)

of an early female-owned property. But Feake broke with her times in many ways. When her husband, Robert Feake, slipped into insanity, she sought a divorce and remarried—a situation that was considered adultery in Connecticut. The couple fled to what became New York, and the property was sold to another Greenwich founder, Jeffrey

Ferris, in 1653. Ferris's son inherited and expanded the house.

Not to lose sight of his original dream, Waters built a new home—attached to the restoration by a breezeway—with the intent of bringing old and new together. Toward that goal, they contacted landscape designer Rosalia Sanni, who became immersed



in investigating what Feake might have grown on the site. “But we didn’t want to replicate the past, we wanted to merge it ornamentally with the present,” explains Sanni. Her solution was to line the front of the original house with herbs and then morph into a modern presentation.

The new structure is living space while the historic house serves as a home office. The two buildings are joined by plantings that are smart in every era. On Greenwich Founders’ Day, which normally happens in July (this year’s event has been postponed), the Waters welcome tours of the property as a proud example of living history.

**EDITOR’S NOTE:** For details about this project, see *Resources*.

**TOP TO BOTTOM:** Raised beds hold edibles and marigolds in the vegetable garden. For the gravel parking court, Sanni installed a smart fieldstone inlay echoing the stone borders for the foundation beds. Along the road, Sanni designed a low stone wall hemming the lawn and the post-and-rail-fenced vegetable garden behind the Feake-Ferris House.



**ARCHITECTURE:**  
Dodaro Architects

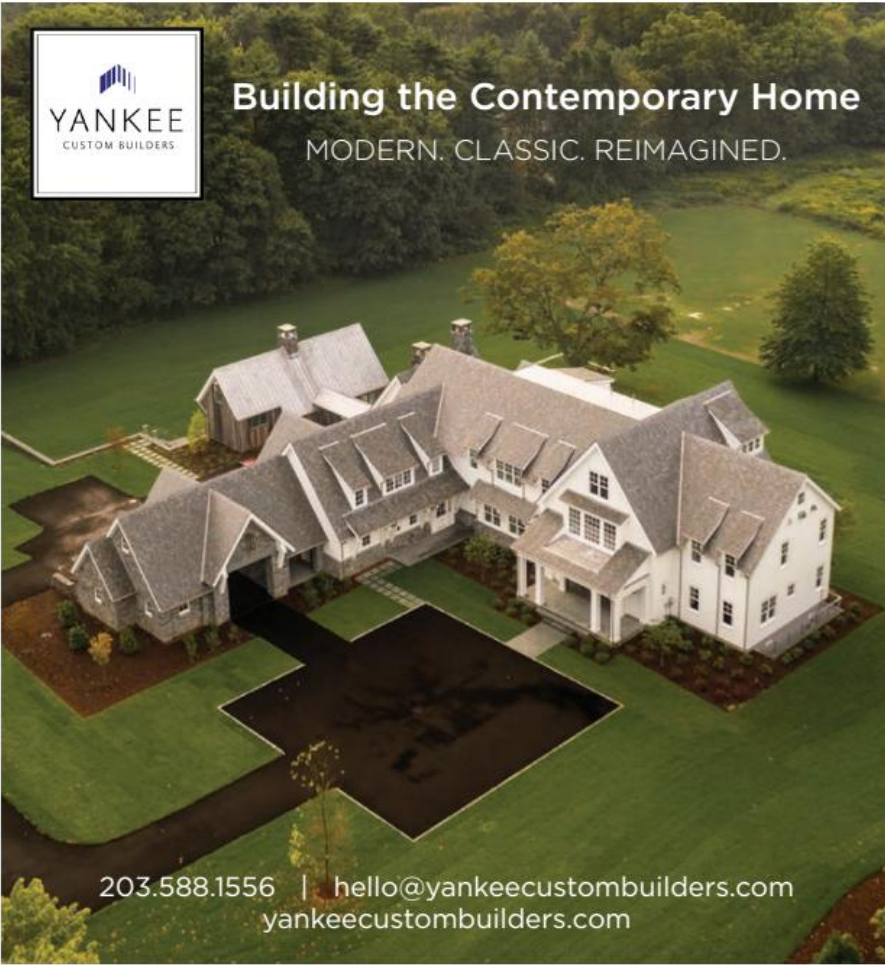
**BUILDER:**  
Redwood Construction

**LANDSCAPE DESIGN:**  
Rosalia Sanni,  
Rosalia Sanni Design



# Building the Contemporary Home

MODERN. CLASSIC. REIMAGINED.



203.588.1556 | [hello@yankeecustombuilders.com](mailto:hello@yankeecustombuilders.com)  
[yankeecustombuilders.com](http://yankeecustombuilders.com)



Full-Service Interior Design Serving Fairfield and Westchester Counties.  
917-579-6959 | [dinaspaidal@gmail.com](mailto:dinaspaidal@gmail.com) | [dinaspaidalinteriors.com](http://dinaspaidalinteriors.com)



THE  
*Linens*  
SHOP  
NEW CANAAN

21 ELM STREET, NEW CANAAN, CONNECTICUT  
203.972.0433 THELINENSHOPCT.COM



## Furniture born on the city streets

We transform Connecticut's city trees  
into uniquely handcrafted furniture.  
Give us a call to make a showroom  
appointment.

73 Maple Ave.  
Higganum, CT  
860-716-8111  
city-bench.com

furniture from the urban forest



# KH

Kimberly Handler Designs

JANE BEILES



1064 North Street | Greenwich, CT

203-340-9213

[kimberlyhandlerdesigns.com](http://kimberlyhandlerdesigns.com)

# Timeless Treasures

Ceramicist Warner Walcott embraces global style to create clean, classic designs.

BY ERIKA AYN FINCH

W

arner Walcott's vessels, bowls, platters, and lamps are the ceramic equivalent of the little black dress: sophisticated, essential, and timeless. Walcott, who creates under the moniker Magnolia Ceramics as a nod to his Mississippi roots, was creative from an early age, but it took him a while to make a career of art. He started out as a premed student at Nashville's Vanderbilt University before detouring into event production in the fields of fashion and publishing. In 2008, after ten years



representing photographers through his own Los Angeles-based agency, Walcott had an epiphany: "I had spent years helping others realize their creative dreams," he recalls. "If I didn't take care of my own creative needs, that ship was going to sail."

Magnolia Ceramics was born in L.A., but two years ago Walcott relocated to Connecticut. These days, he travels between two studios, one in the artsy SoCal town of Ojai, just north of L.A., and the other in Bethel, Connecticut. The self-taught craftsman (he's a big believer in author Malcolm Gladwell's 10,000-hour rule) admits he could have





IF YOU CAN DREAM IT,  
WE CAN BUILD IT.



**REDWOOD**  
CONSTRUCTION

CUSTOM HOMES | PROJECT MANAGEMENT | RENOVATIONS  
ADDITIONS | DESIGN | SERVING ALL OF FAIRFIELD COUNTY

203.653.9105 | [www.redwoodconsultingco.com](http://www.redwoodconsultingco.com)



embraced a different art form; he took classes in both drawing and painting at Vanderbilt, and only briefly dabbled in ceramics. “But [in 2008], ceramics was what I needed. I know it sounds dramatic,” he concedes, “but ceramics was

life-changing. It was therapeutic and brought me clarity. I felt really good for the first time in a long time.”

Walcott’s work hints at Danish, English, and Japanese design. Each piece is simple and unadorned with clean, strong lines and a palette



“Your home is your oasis,  
never compromise.”

~ LISA DAVENPORT ~



 **LDD INTERIORS.COM**

*“I HAD SPENT YEARS HELPING OTHERS REALIZE THEIR CREATIVE DREAMS. IF I DIDN’T TAKE CARE OF MY OWN CREATIVE NEEDS, THAT SHIP WAS GOING TO SAIL.”*  
—ARTIST WARNER WALCOTT



heavy on soft neutrals and vibrant blues and greens. The craftsman, who will quickly tell you that he doesn’t take a fine-art approach, describes his ceramics as the result of a cumulation of life experiences. Pieces reflect cities inhabited, places traveled, careers explored, and people loved. First and foremost, Walcott wants his work to exude timelessness and the avoidance of trends at all cost. And he says there’s nothing more flattering than when

someone chooses to make Magnolia Ceramics part of their daily life.

“It blows me away when someone gets in touch with me and says one of my lamps is the first thing they see every morning,” Walcott says. “It makes me realize that these objects can bring joy to people, and that means a lot.”

**EDITOR’S NOTE:** Warner Walcott is represented by Plain Goods, plain-goods.com. To see more of his work, visit [magnoliaceramics.com](http://magnoliaceramics.com).



**MAKE YOUR HAPPY PLACE YOUR HOME.**

1375 Post Road East, Westport, Connecticut [tuskhomeanddesign.com](http://tuskhomeanddesign.com)



**Technology to Simplify Your Life**

- Home Automation
- Custom Home Theaters
- Lighting | Music
- Motorized Shades
- Wifi & Networking
- Climate Control
- Cameras
- Automated Door Locks



**CALL**  
**smarthome**  
 AND THEATER SYSTEMS

**AUDIOVIDEOCT.COM | 203-659-4734**  
 Your Trusted Technology Design & Installation Experts.  
*Contactless appointments are available.*





Design collaborations between makers, artisans, and manufacturers are more popular than ever.

Editor at Large **Clinton Smith** shares the scoop on one perfect partnership.

Discover more inspiration on Instagram at @nehomemag and @mrclintsmith.



## AT THE ART OF THE MATTER

What happens when a celebrated textile and product designer teams up with an artist well-known for her high-contrast creations? A dynamic line of wall coverings and fabrics that lure and dazzle the eye. Lori Weitzner of Weitzner Limited and artist Lisa Hunt first met at an interior design networking event, and as Weitzner was developing the Reverie collection of fabrics and wallpapers, she knew Hunt would be an ideal collaborator to create a number of the one-of-a-kind designs. The visual repetition of Hunt's graphic work, as well as her use of metallic (particularly gold) finishes, was totally in sync with Weitzner's penchant for creating timeless designs with varying juxtapositions—whether it's through color, pattern, or texture. To hear more about this debut from the designers themselves, click on Design Dialogue at [nehomemag.com](http://nehomemag.com) for my video interview with the duo. [weitznerlimited.com](http://weitznerlimited.com), [lisahuntcreative.com](http://lisahuntcreative.com)



**CLOCKWISE FROM TOP CENTER:** Lisa Hunt and Lori Weitzner. The Reverie collection is defined by its expressive motifs and includes wallpaper designs such as Olympia. Other patterns include Hourglass; Lightray; and Dorado.





# NORTHEAST

KITCHEN CENTER

[northeastco.com](http://northeastco.com)  
(203) 576-8696  
#jointeamnortheast



 **Rosalia Sanni Design llc**  
Landscape & Garden Design

Old Greenwich, CT  
[rosaliasanni.com](http://rosaliasanni.com)  
203-918-4619

# Wet Footprints Stop Here

A polished-but-playful pool suite completes a lakefront vacation home.

TEXT BY LARRY LINDNER

**A**dding a pool suite to a newly acquired weekend getaway just made sense. The property already boasted an infinity-edge swimming pool, and the main house bordered one of Connecticut's largest lakes. Between the homeowners' three children, their children's friends, and a steady influx of adult guests enjoying summer days filled with

**BELOW RIGHT:** A Holly Hunt sectional surrounds a firepit from Restoration Hardware. **BELOW LEFT:** After a dip in the pool—or lake—swimmers can freshen up at one of the cabana's blue Whyte & Co. sink basins, which sit atop custom floating vanities.



swimming, boating, and fishing, there would be a lot of showering, changing, and hanging out in bathing suits. And the owners did not want all the wet feet traipsing through the main house.

Finding the room to build a pool house was not a concern: the home sits on thirty acres. But a number of existing structures, including a guesthouse and a barn, meant "the last thing they needed was another building," says Denise Davies, principal of D2 Interieurs in Fairfield County.

**INTERIOR DESIGN:**  
Denise Davies,  
D2 Interieurs

**ARCHITECTURE:**  
Mike Cusato, Cusato  
Architecture

**LANDSCAPE DESIGN:**  
Jennifer Anderson  
Design & Development



KWD  
karen wells design



203-273-7897 | karenwellsdesign.com



At Heidi Holzer Design & Decorative Work and Trowel & Paper, we are here for you during these unprecedented times, to provide custom luxury wall finishes. Our team is able and willing to go above and beyond to assist you with projects big and small with video conferencing, online portfolio reviews, and safe working practices on the job.

HeidiHolzer.com  
 @HeidiHolzerDesign  
 203-544-9471  
 trowelandpaper.com



	TROWEL & PAPER
EST. 2018	<i>artisanal wallpaper</i>
	HANDMADE IN WILTON, CT



That's why Davies collaborated with architect Mike Cusato of Cusato Architecture to convert the backyard-facing lower level of the home from a dated family room into a pool-house paradise, complete with bar, foosball table, pool table, sectional sofa facing a large TV and fireplace, funky laundry room, and dog shower. At 1,800 square feet, the space, a no-fuss respite from the more formal rooms upstairs, hardly makes a dent in the home's 14,000-square-foot total.

Among the most trafficked areas of the space are the bathroom and locker room, or the "changing cabana," as the homeowners call it. Swimmers can rinse off in an outdoor shower hidden by a custom teak surround. The changing cabana includes playful touches like a floating vanity with blue (the client's favorite color) sink basins designed to complement the deep blue floor tiles that spell out "No Diving."

It's here in the metal lockers that sunbathers



**CLOCKWISE FROM FAR LEFT:** Landscaping by Jennifer Anderson Design & Development adds the right touches of green to a backdrop of blues and whites in order to complete the bucolic scene. Rows of lockers by SchoolLockers.com offer plenty of storage for the family and their guests to stow everything from flip-flops to sunscreen. A custom teak shower surround allows for a luxurious—and private—outdoor bath.



can also stow clothes and gear for later—swapping a swimsuit for a pair of shorts and a T-shirt when switching from pool splashing to boating, for instance. (Each child has their own storage area, too.)

The owners love both the form and function of the revamped room. "Denise totally understood our vision," says one of the homeowners. "The space not only looks amazing, but we never have to worry about visitors running into the house, leaving a trail of wet footprints when they come inside."

**EDITOR'S NOTE:** For details about this project, see *Resources*.

# *The 2020 AIA Connecticut* **ALICE WASHBURN WINNERS**



EXCELLENCE: NEW CONSTRUCTION  
FRENCH COUNTRY RESIDENCE

**The Connecticut Chapter of the American Institute of Architects** (AIA Connecticut) Alice Washburn Awards celebrate excellence in traditional house design. Washburn, a prominent twentieth-century residential architect, was known for her “thoughtful stylistic and programmatic inven-

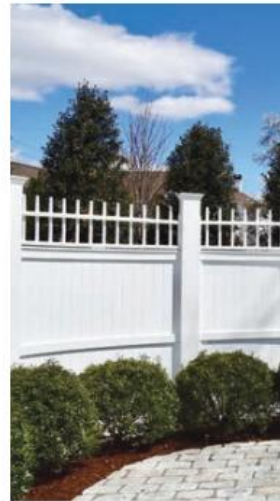
tion.” Building on her legacy, this year’s top projects exemplify exquisite design, creative problem-solving, and meticulous execution. Winners are chosen in three categories: accessory buildings, additions/renovations, and new construction. Here’s a glimpse of the award-winning architects and their work.



# The 2020 AIA Connecticut ALICE WASHBURN WINNERS



## EXCELLENCE: ADDITIONS/RENOVATIONS



### Stone Country Residence

*Architect: Charles Hilton Architects, Photography by Robert Benson Photography*

The stately Greenwich stone country house was in need of a complete renovation, inside and out. Enter the pros at Charles Hilton Architects, who worked their magic, from incorporating new slate roofing and reproduction windows, to adding a conservatory breakfast room and a retooled mudroom annex. When the dust cleared, 75 percent of the interior—including a new gourmet kitchen, main suite, and his-and-her studies—had been tastefully transformed.

## EXCELLENCE: NEW CONSTRUCTION

### Classical Revival Residence

*Architect: Douglas VanderHorn Architects  
Photography by James Merrell*

Navigating ecological and grading constraints, Douglas VanderHorn Architects sited the classic Shingle-style house on the perfect perch from which to enjoy water views. Formal symmetry creates a commanding front façade that incorporates rubble stone veneer and Alaskan yellow-cedar shingles as well as decorative columns and trim. A stately exterior (coupled with resort-inspired grounds) transitions to an interior that is equal parts elegant and comfortable.



### French Country Residence

*Architect: Mark P. Finlay Architects, Photography by Warren Jagger*

Long Island Sound meets the French countryside in this grand 9,500-square-foot stone estate. Channeling the romance of a sixteenth-century chateau, Mark P. Finlay Architects incorporated arched dormers, flared slate roofs, and elegant iron railings and balconies. Formal terraced gardens form outdoor living spaces while simultaneously softening the grade down to the water. An equally exquisite interior is peppered with art and antiques gathered from the owners' travels.



## EXCELLENCE: ACCESSORY BUILDINGS

### Anne Curtis House Garage

*Architect: Paul B. Bailey Architect, Photography by Richard Caden*

The circa-1840 Victorian was a beauty, but the existing two-car garage it shared a lot with lacked the same luster. New owners tasked architect Paul B. Bailey with designing a garage that would complement the home's historic aesthetic, while supplying ample storage. The new "carriage house" does just that and is now a pretty focal point in its own right, as it effectively plays the part of the ultimate Victorian folly.



### Carriage House

*Architect: Scot Samuelson Architect  
Photography by Wendell Weber*

Designed to resemble an estate carriage house and to pair seamlessly with the main residence, this new build does double duty as a three-car garage and a gracious guest suite. A complex roof line ensures maximum square footage beneath the dormers and gables, while the garage doors have been detailed to look taller, giving the charming allusion that they could accommodate an antique coach.



### Washington Pool House

*Architect: Haver & Skolnick Architects, Photography by Robert Benson Photography*

Set on a seventy-acre gentleman's farm, this pretty pool house—a classic saltbox clad in weathered siding with copper overhangs and accents—fits right in with its stunning surroundings. The retractable glass doors blur boundaries between outdoors and in, and lead to a contemporary oasis, complete with a lounge, gym, pantry, and powder room, not to mention plenty of storage for pool accessories.

## Notebook

What a few months it has been! Since the publication of our spring issue, life has changed quite dramatically and has presented many challenges. The Connecticut design community has continued to rise to the occasion by helping those in need during the COVID-19 crisis while also managing to move business forward.

**Tile America** is lending a helping hand to those living with food scarcity during the COVID-19 crisis by donating meals to area homeless shelters. The company is on track to donate more than 200 meals.

**Moss Design** jumped in to help healthcare workers by donating more than 500 masks to Bridgeport's ICU where principal Meghan De Maria's sister works. Remnant fabrics were used, so the masks were beautiful and functional.

On a lighter note, Norwalk-based **Diane James Home** has partnered with **AERIN** to pair their faux floral couture with AERIN's popular vases. This design A-team is making it effortless to bring much-needed beauty into our homes.

**Beth Krupa Interiors (BKI)** is on the move. The firm has relocated to a new home at 19 East Elm Street in Greenwich. The space is designed by Massimo Vignelli and will host both a design studio and gallery. The gallery will showcase art and accessories collected by the BKI team. Stop by and take a look.

Rhonda Eleish and Edie van Breems of **Eleish Van Breems** have been busy. The team opened a to-the-trade Lee Industries

## Style Scene

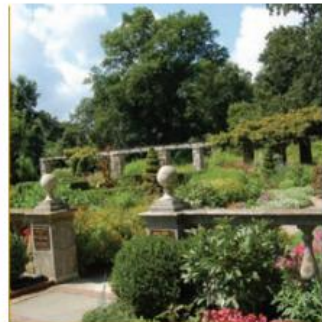


### « Bartlett Arboretum & Gardens

ONGOING

Stroll through twelve gardens including a tropical oasis, herb garden, magnolia collection, and more.

Stamford  
[bartlettarboretum.org](http://bartlettarboretum.org)



### ⤴ Goodbody Garden

ONGOING

Packed with mature plantings, this inspiring space is a Smithsonian-designated garden.

Stamford  
[thestamfordgardenclub.org](http://thestamfordgardenclub.org)

### » Gertrude Jekyll Garden

ONGOING

Tour this historic garden designed by Gertrude Jekyll and located on the grounds of the Glebe House Museum.

Woodbury  
[glebehousemuseum.org](http://glebehousemuseum.org)



### « Hollister House Garden

ONGOING

Delight in this American interpretation of a classic English garden.

Washington  
[hollisterhousegarden.org](http://hollisterhousegarden.org)



### » Shop the Greenwich Design District

ONGOING

From luxury bedding to the latest in lighting—you can find it along Putnam Avenue.  
[nehomemag.com/design-destination-the-greenwich-design-district/](http://nehomemag.com/design-destination-the-greenwich-design-district/)



### ⤴ Shop Westport's Sconset Square

ONGOING

Even veteran Fairfield County shoppers may not know about this delightful design-centric shopping area in Westport.

[nehomemag.com/shopping-sconset-square-in-westport-connecticut/](http://nehomemag.com/shopping-sconset-square-in-westport-connecticut/)

### Digging Deeper: Capturing the Spirit of Gardens

JULY 18

Be inspired to document and tell the story of your own garden with experts James Hall and Julia Cencebaugh Kloth at Old Barlow's Carriage House and Garden.

Ridgefield  
[gardenconservancy.org](http://gardenconservancy.org)

### Garden to Vase

AUGUST 6

Enjoy an afternoon of floral arranging and tips for growing your own flowers at Roseland Cottage.

Woodstock  
[historicnewengland.org](http://historicnewengland.org)

### Third Annual Compass Rose Steampunk Festival

SEPTEMBER 26

Celebrate all things Steampunk while enjoying live music, performances, and shopping on the grounds of Roseland Cottage.

Woodstock  
[historicnewengland.org](http://historicnewengland.org)

**EDITOR'S NOTE:** Events are subject to change. Please call or visit the website for times and ticket prices.



showroom on Railroad Place in Westport in June. They have also opened a Nantucket outpost, so you can shop their Nordic-style wares on island. Not planning to hop the Hy-Line? Their flagship shop on Franklin Street in Westport remains open to the public.

Westport has yet another fabulous place to shop. Swedish interior designer **Lars Bolander** has opened a new retail outpost on Post Road. Bolander's eponymous shop will feature an uber-stylish mix of contemporary furniture, textiles, antiques, art, and accessories.

No need to go anywhere to shop **Chris Roughan's** new online store. Roughan is helping you get a much-coveted designer look with *roughanhome.com*. The site features art, objects, lighting, and furnishings all carefully selected by the designer.

Cheers to Douglas VanderHorn Architects, Mark P. Finlay Architects, Charles Hilton Architects, Paul B. Bailey Architect, Scot Samuelson Architects, and Haver & Skolnick Architects. They all received **Alice Washburn Awards of Excellence** from the Connecticut Chapter of the American Institute of Architects (AIA Connecticut), which acknowledged excellence in traditional house design.

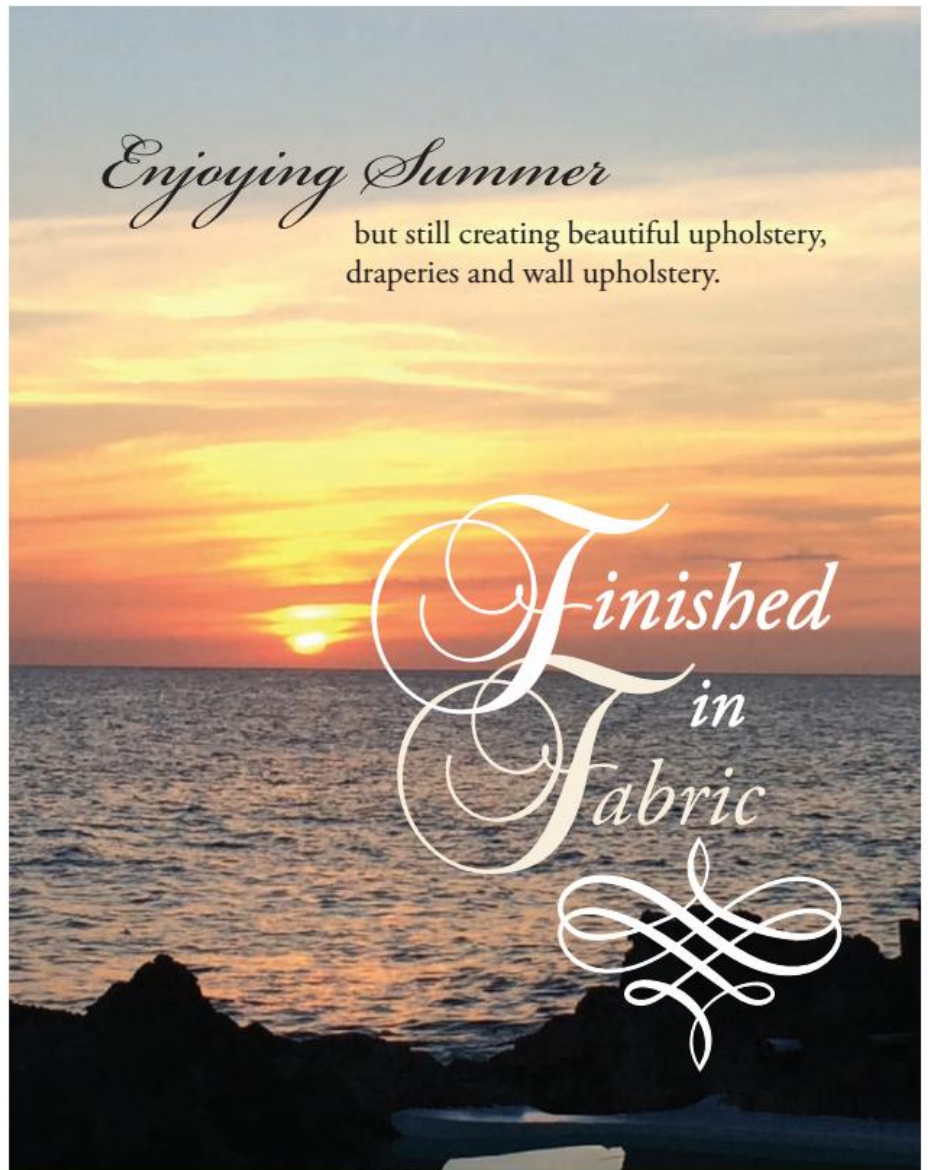
We are enthusiastically looking forward to **New England Home's Luxury Home Design Summit**, now taking place October 5-7 at the picturesque Chatham Bars Inn on Cape Cod. This year's event aims to help professionals in the home-design and construction industries market to the region's most affluent consumers. We can't wait to safely see all of our industry partners there!

—*Edited by Lynda Simonton*

Do you have news to share with New England Home? Email Lynda Simonton at [lsimonton@nehomag.com](mailto:lsimonton@nehomag.com).

## Enjoying Summer

but still creating beautiful upholstery, draperies and wall upholstery.



Visit our website [finishedinfabric.com](http://finishedinfabric.com) for project information.



Tingalaya's Retreat, Negril, Jamaica

EDITED BY EMILY EDIGER

Just like everyone else, the *New England Home Connecticut* team hunkered down this spring. To stay connected with our readers and the design community, we hosted a series

of virtual events. The positive response to these online gatherings was inspiring, and we appreciate everyone who took the time to attend and participate.

## Real Tips from Design Leaders

A group of seasoned design professionals gathered via Zoom to discuss long-term success in a changing design market. Moderated by marketing and PR pro Elizabeth Ethridge McGann of the Ethridge McGann Group, the roundtable produced an informative dialogue on how these thought leaders are tackling the various challenges presented by the COVID-19 pandemic.



McGann's Zoom set up was, in her words, a "precarious stack of books."



Elizabeth Ethridge McGann of the Ethridge McGann Group



Christopher Pagliaro of Christopher Pagliaro Architects



Michelle Morgan Harrison of Morgan Harrison Home



Bill Charney of Advanced Home Audio



Tara Vincenta of ARTEMIS Landscape Architects



Randy Sullivan of Gatehouse Partners



New England Home's Kathy Bush-Dutton



New England Home's Jenna Talbott

## Welcome Editor in Chief Jenna Talbott

In early May, *New England Home* hosted a virtual cocktail hour to welcome our new editor in chief, Jenna Talbott. Attendees joined Talbott and *New England Home* publisher Kathy Bush-Dutton for a drink and a chat. Talbott discussed exciting updates to the editorial team and her plans for the future of the publications, and she took audience questions for a lively discussion about media and residential design.



**Ginger Pendant**  
in White and Gold Leaf  
By Corbett Lighting



With an attention to detail and luxury materials, Diane James Home creates beautiful and lifelike faux floral arrangements handmade to order in their studio. Showroom now open!

DIANE JAMES  
—  
HOME

112 Main Street  
Norwalk, CT 06851  
203-846-0303  
dianejameshome.com



31ST ANNUAL  
**ARTS**  
AWARDS  
WINNER

**Chloe Winston**  
LIGHTING DESIGN

68 Water Street  
South Norwalk, CT 06854  
203-957-8686  
chloewinstonlighting.com

# MARY ELIZABETH PETERSON

COOL | CALM | **very** COLLECTED.  
Art that elevates your space and your mindset.

maryelizabeth.peterson@gmail.com  
maryelizabethpeterson.com | @mepeterson.art



Shenanigans 2  
51 x 71" | acrylic on canvas

STEPHEN KARLSCH

## To The Trade Only Market Days

IN PARTNERSHIP WITH WAKEFIELD DESIGN CENTER

### Day 1: The Marriage of Art + Design

In the first installment of the virtual To The Trade Only Market Days, attendees tuned into a presentation by textile designer Lori Weitzner and artist Lisa Hunt, moderated by *New England Home's* editor at large, Clinton Smith. The two women offered a behind-the-scenes look at their collaboration for Weitzner's latest collection. They shared photos that gave attendees insight into their design process as well as a peek at their stunning fabrics and wallcoverings.



New England Home's  
Clinton Smith



Wakefield Design  
Center's George  
Sneed



Lori Weitzner of  
Weitzner Limited



Textile designer Lori Weitzner  
and artist Lisa Hunt



Weitzner and Hunt provided  
a sneak peek at their  
wallpaper collaboration

Carl Dellatore,  
author, editor, and  
textile designer



Janice Parker of  
Janice Parker  
Landscape Architects



### Day 2: Incorporating Pattern in Garden Design

The second portion of the online event featured an engaging conversation between Carl Dellatore, editor of the new book *Garden Design Master Class*, landscape designer Kathryn Herman, and landscape architect Janice Parker about the importance of pattern, rhythm, and form in landscape design. In addition to a slideshow of Parker and Herman's projects showcased in Dellatore's book, the event also included a timely talk on creating your own backyard paradise.

Kathryn Herman  
of Kathryn  
Herman Design



During the webinar, Dellatore  
shared images from his book, which  
features gardens like this one from  
Kathryn Herman Design.

### Day 3: The Life and Legacy of Mario Buatta

In the third and final presentation of To The Trade Only Market Days, author Emily Evans Eerdmans provided a unique look into the life of the Prince of Chintz, Mario Buatta. Eerdmans's friendship with Buatta, highlighted by personal stories and humorous anecdotes, added an interesting perspective to a discussion of the legendary interior designer's work and legacy.

Mario Buatta  
(photograph courtesy  
of the Buatta Estate)



Emily Evans  
Eerdmans of  
Eerdmans Fine Art





**DANIEL CONLON  
ARCHITECTS**



11 Grumman Hill Road, Wilton, CT  
203.544.7988  
dconlonarchitects.com



## Amazing products. Unparalleled service.

My company won 11 awards for our work at 66 High Street in Guilford – but we couldn't have done it without Bender.

Bender offers amazing service, so many product choices, and design input that makes our job easy.

No wonder the best craftsmen and women come to Bender to create their next masterpiece. You can too – at a Bender showroom near you.



**K.C. Horton**  
Horton Group

**b BENDER**

bendershowrooms.com | 203.498.5182  
decorative plumbing | kitchen & bath cabinetry | lighting | tile & stone  
Bender showrooms are open to all by appointment only.

# NEW DATE!

CELEBRATE NEW ENGLAND'S  
FINEST EMERGING DESIGN TALENT

## NOVEMBER 5TH

#NEH5UNDER40

Join us to honor the winners of the eleventh annual 5 Under 40 Awards. Raise a glass to exceptional design at the season's best cocktail party, and bid on five one-of-a-kind rugs designed by the winners as they are auctioned off for a great cause. All auction proceeds will go to Barakat, a charity that strengthens education and literacy in Central and South Asia.

The Galleria at 333 Stuart Street, Boston  
Event Starts at 6:00 p.m.  
Tickets on sale in September  
[nehomemag.com](http://nehomemag.com)



**JESSIE CARROLL**  
Architecture



**EMILY PINNEY**  
Interior Design



**STEPHANIE KING**  
Interior Design



**ALINA WOLHARDT**  
Interior Design



**ELIZABETH HENDRICKSON**  
Landscape Design

New England Home's

# 40

---

# 5 UNDER FORTY

## AWARDS

PRESENTING SPONSOR

**Landry & Arcari**  
RUGS AND CARPETING

SIGNATURE SPONSORS

**HUTKER**  
ARCHITECTS



BOSTON DESIGN  
CENTER

 **FBN Construction**

GREGORY LOMBARDI DESIGN  
*Landscape Architecture*

PHOTOGRAPHY  
SPONSOR

*Karastan*

AWARD  
SPONSOR

**W**

WOODMEISTER MASTER BUILDERS

TREAT-TO-GO SPONSOR

**INSTALLATIONS PLUS**

# HOME BUILDERS & REMODELERS ASSOCIATION OF FAIRFIELD COUNTY

## BUILDING COMMUNITIES. BUILDING CONNECTIONS

We hope you, your business, and your clients are staying safe. We are working with our local communities to provide support and resources to those most effected. See more information on our website at [www.buildfairfieldcounty.com](http://www.buildfairfieldcounty.com)

Leia T. Ward  
LTW Design



Visit [www.buildfairfieldcounty.com](http://www.buildfairfieldcounty.com) to join the best builders, remodelers, subcontractors, and design specialists in Fairfield County.

Our 515+ member association is made up of a diverse group of building industry professionals.  
203-335-7008 | [hbra@buildfairfieldcounty.com](mailto:hbra@buildfairfieldcounty.com) | [www.buildfairfieldcounty.com](http://www.buildfairfieldcounty.com)

# KARP

RENOVATIONS • CUSTOM HOMES

16 CROSS STREET, NEW CANAAN, CT 06840 • 203.972.3366 • WWW.KARPASSOCIATESINC.COM

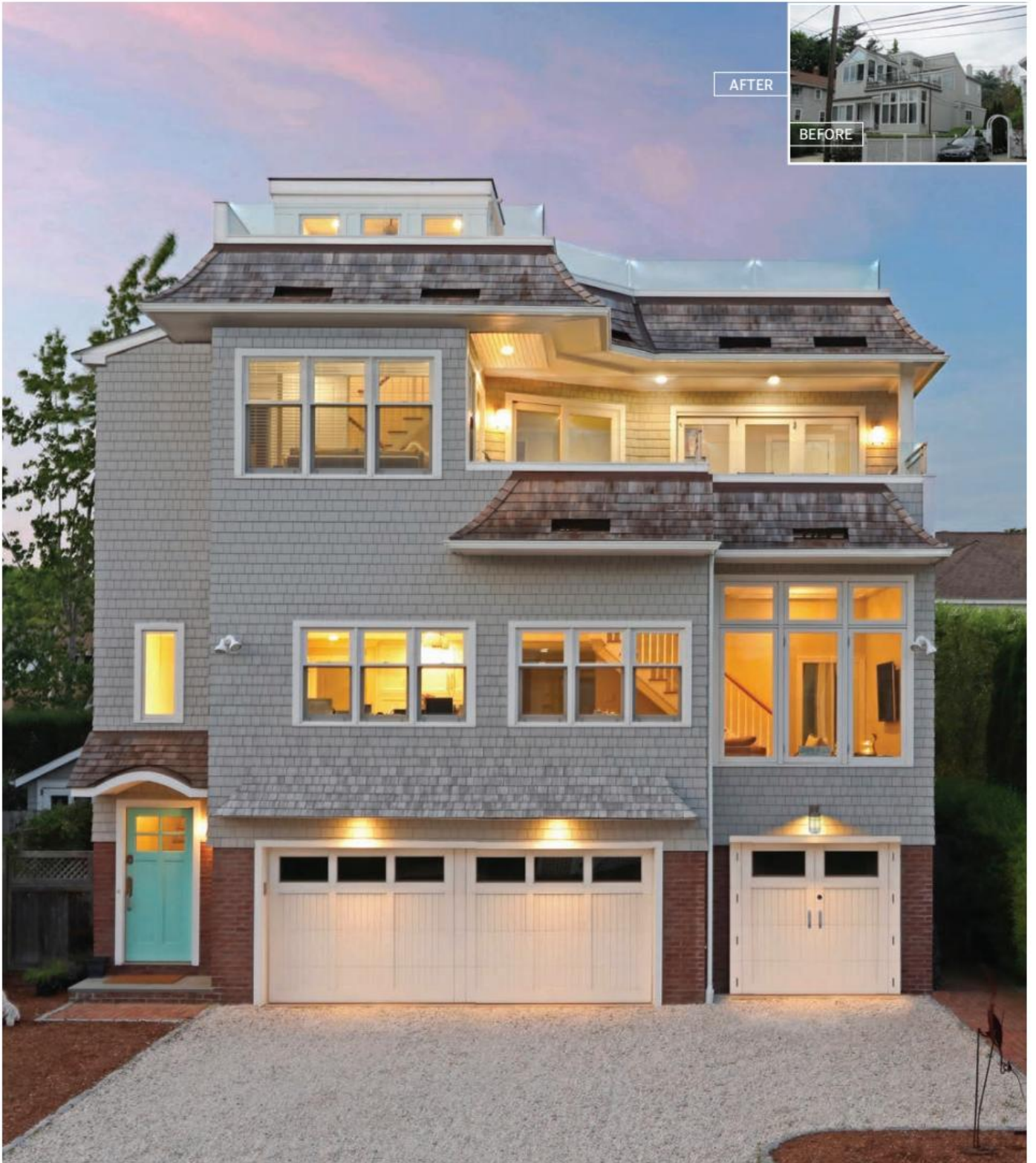


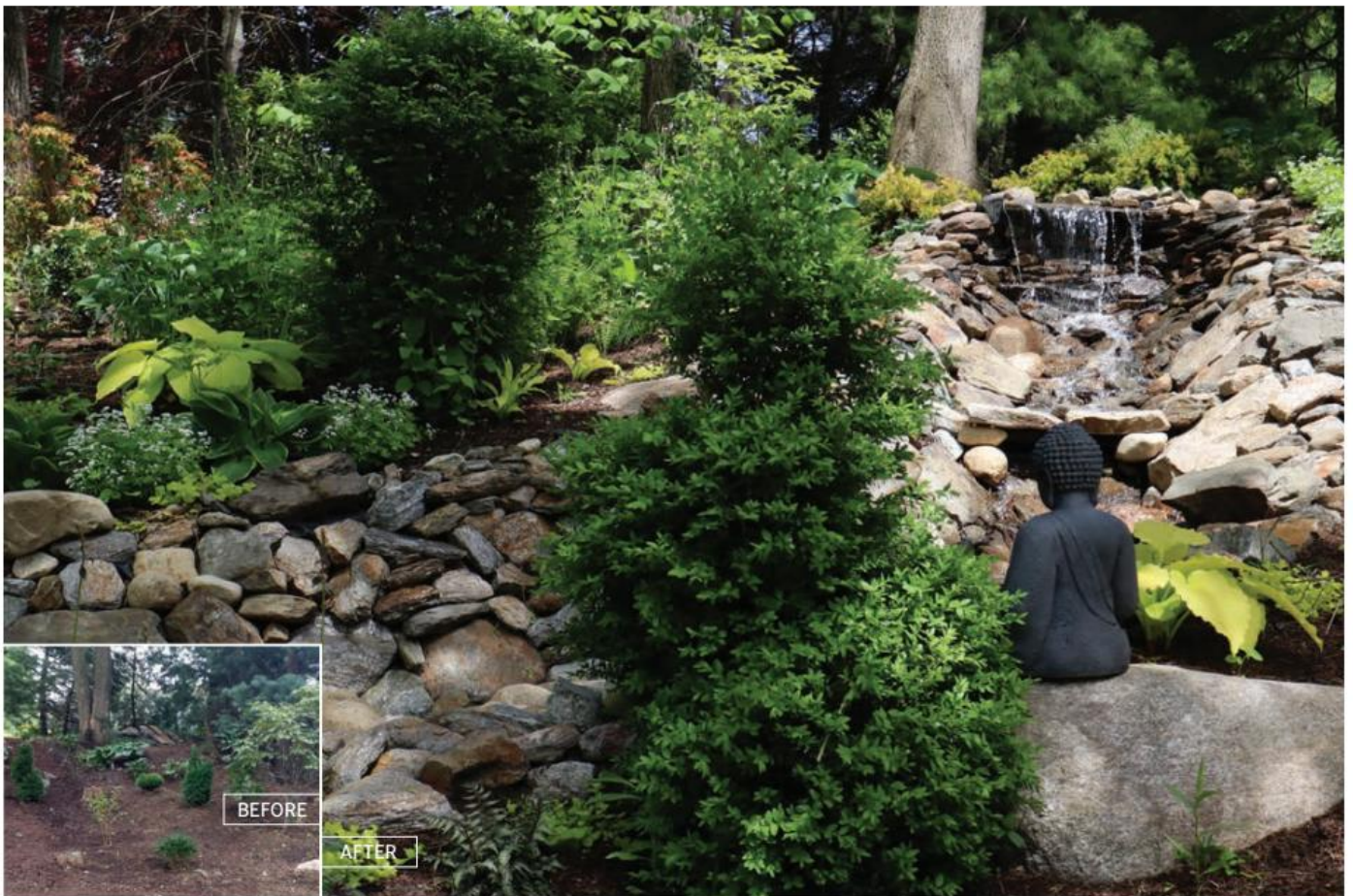
**Bringing Ideas  
To Light For  
Over 35 Years**



*Portfolio of Inspired*

# RENOVATIONS





# Austin Ganim Landscape Design



**Austin Ganim Landscape Design, LLC**  
320 Kings Highway Cutoff  
Fairfield, CT 06824  
203-333-2003  
austinganimlandscapedesign.com



“Each space provides a harmonious transition whether you choose the efficiency of the stairs, a meandering stroll through the meadow garden, or to pause and reflect at the waterfall.”



AUSTIN GANIM & EVA CHIAMULERA, ASLA, PLA

**The Challenge:**

Create interesting and inviting garden experiences in a landscape dominated by a steep hillside separating the two primary outdoor spaces. Each vignette provides a unique transition between the two levels.

**The Elements:**

The overall design can be broken down into three elements: a whimsical radial pollinator garden, a grand staircase with a plum tree allée, and a meditative woodland waterfall garden. Plantings are used to define the spaces and set the tone for the experience.



# Beth Krupa Interiors, LLC



**“We’re excited to announce our new design studio and gallery—stop by to see our one-of-a-kind, artfully selected items for the home.”**



BETH KRUPA, ALLIED ASID



BETH KRUPA INTERIORS

**Beth Krupa Interiors**

19 E. Elm Street  
Greenwich, CT  
203-890-9292

info@bethkrupainteriors.com  
bethkrupainteriors.com

### **The Challenge (facing page):**

Making the small footprint of the homeowner’s en suite bathroom feel larger and more spacious, utilizing the existing slanted roofline.

### **The Result (facing page):**

Beachy romantic; the owners were married in Montauk, so water and the beach are special, romantic places. We used this inspiration in our material selection, from the casual finish of the nightstands to the thousands of tiny shell fragments in the chandelier. The strength and romance of the room lies with the stunning iron bed and iron sculpted chair softened by the natural woven motorized romans and delicate, sheer drapery.

### **The Backstory (this page):**

Entrusted to design a first home for a young Manhattan couple who were starting their new family and new lives in Connecticut, we wanted to keep the vibe hip and cool, but still casual and comfortable.



# Christensen Landscape Services



DONNA CHRISTENSEN



ChristensenLANDSCAPE

**Christensen Landscape Services**

325 Reeds Gap Road  
P.O. Box 593  
Northford, CT 06472  
203-484-0424

christensenlandscape.com

@DonnaCLS

**Ives Street Summary:**

This property rests among rolling hills and natural wetlands. The grand scale and architecture of the home dictated a more formal landscape. Wafts of hydrangeas and grasses soften the hardscapes, and native and non-native trees are grouped along the woodland. The outdoor pool, designed by Christensen, has a two-sided vanishing edge. The entertainment-ready outdoor kitchen features stainless cabinetry and a natural green roof.

**Old Quarry Summary:**

The primary challenge was creating a unique landscape without detracting focus from the picturesque vistas of Long Island Sound. To accomplish this, a clean style and neutral gray tones were used to frame the view. The water in the vanishing-edge pool blends seamlessly with the sea; this flowing visual is matched in the adjacent black-granite spa tub. Given its quarry heritage, the property's existing boulders and ledges were incorporated into the design.

**Ridge Road Summary:**

This property offered little to invite the owner, an avid gardener, into the landscape. Natural stone walls, repurposed bluestone patios, and a giant cedar pergola were designed to create a welcoming entrance to a more comfortable outdoor entertainment space. A lovely natural cedar gate and fence top more natural granite walls that surround the homeowners' playground—a huge vegetable garden.



AFTER

PORTFOLIO OF INSPIRED RENOVATIONS

## Connecticut Stone

**“Balance plays an important role in this renovation. The organic stones selected for the project are both stately and warm, elegant and classic.”**

—Tyra Dellacroce





TYRA DELLACROCE, VICE  
PRESIDENT OF INTERIOR  
SALES & MARKETING

**Connecticut Stone**  
138 Woodmont Road  
Milford, CT 06460  
203-882-1000  
tyra@connecticutstone.com  
connecticutstone.com



**Facing Page:**

This fireplace incorporates artistic pieces of stone that were mixed together with a custom blend of veneer that included CT Split Fieldstone and Byram Black Granite. Mason: Michael Nusdeo of Ridgeview Stone Design.

**This Page (Top):**

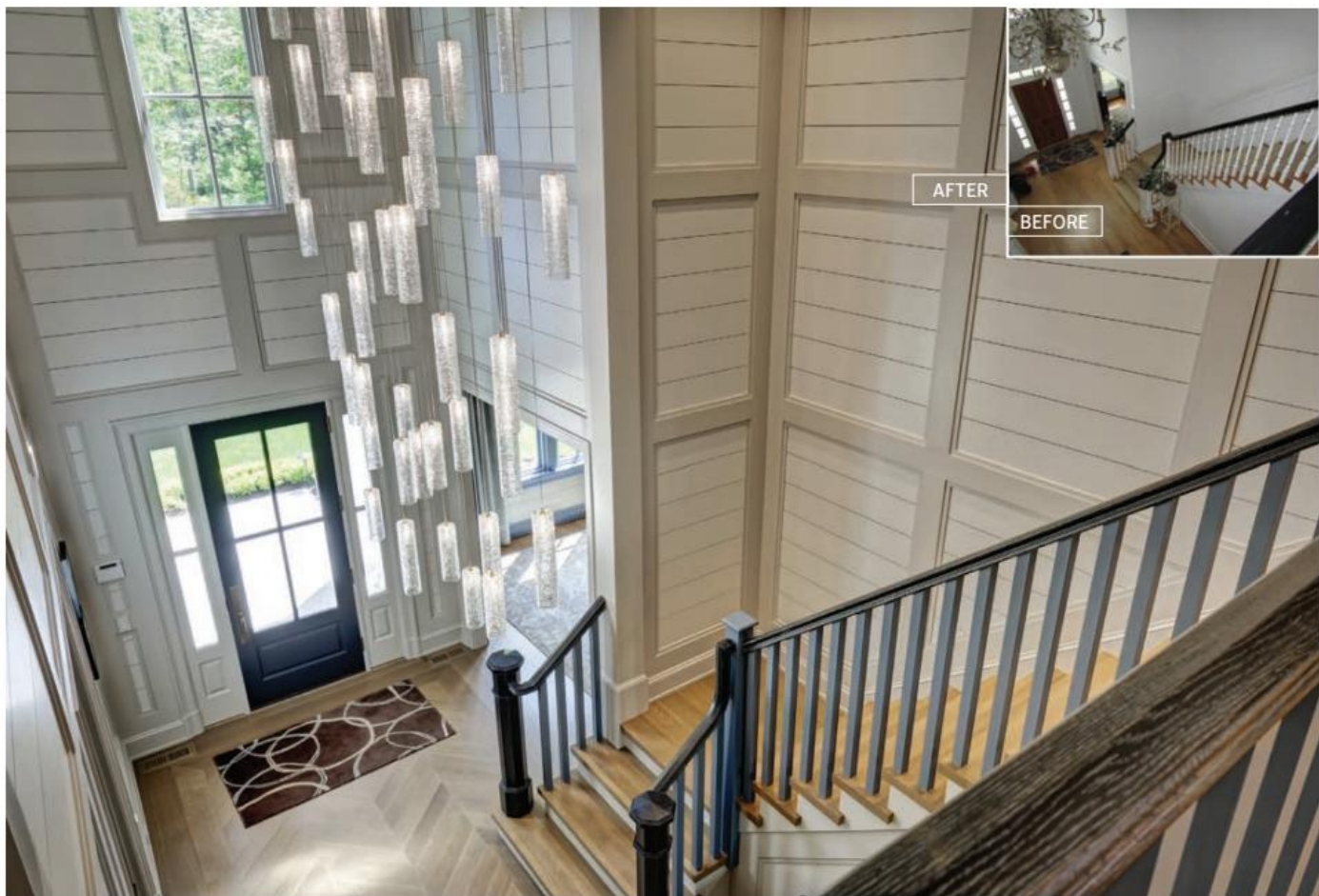
These Absolute Black Granite Honed countertops were paired with the customer's house veneer, which was a custom blend in a square cut and strip pattern. Designer: Peter Cadoux, Mason: Michael Cobuzzi, Builder: Hobbs, Inc. Architect: Peter Cadoux. Designer: Ray Forehand.

**This Page (Middle):**

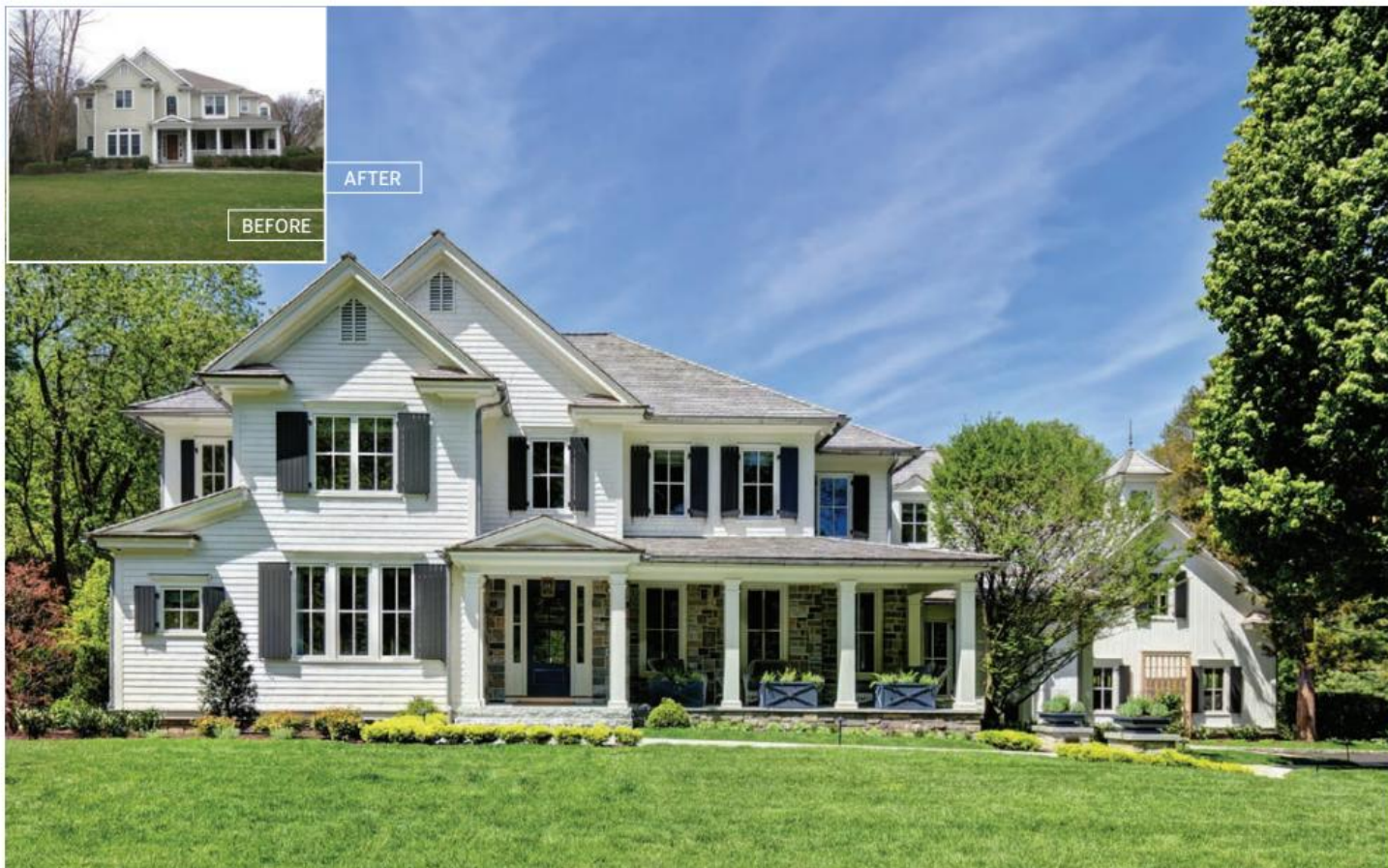
This outdoor entertaining area features a swimming pool and dining area with a sandblasted Jerusalem Limestone for the pool coping and paving. Builder: Chris Philips, Designer: Amy Zolin, Architect: Beinfield Architecture.

**This Page (Bottom):**

CT Stone's Split Fieldstone ThinStone™ was used to create this cozy firepit, while the pool deck consists of Hispania Granite paving and coping.



# Domus Constructors, LLC



### Our Why:

We have been performing incredible, award-winning renovations for decades. It is our mission—we provide our customers with an honest, accountable service experience that leads to an inspired result.

### What:

Domus Constructors worked harmoniously with the clients, design professionals, and the skilled craftspeople to complete this whole-house renovation project.

### The Result:

The project consisted of upgrading and expanding interior and exterior spaces to make them more luxurious, inviting, and energy efficient. A breathtaking and welcoming entryway with high ceilings and dramatic lighting leads into the living room, kitchen, and sunroom. The end result was a high-quality residence that met our clients' every wish and was completed as scheduled.



CHRIS SHEA

**DOMUS**  
CONSTRUCTORS, L.L.C.

**Domus Constructors, LLC**  
P.O. Box 181  
Greens Farms, CT 06838  
203-852-6789  
DomusLLC.com



PORTFOLIO OF INSPIRED RENOVATIONS

# Freddy & Co. and BioNova<sup>®</sup> Natural Swimming Pools



### The Goal

To design a unique organic pool that fits the environment and creates a natural oasis for the homeowners.

### The Benefits

BioNova® Natural Swimming Pools are completely chemical-free, eco-friendly, and healthful for swimming. Natural swimming pools replicate and optimize the conditions found in naturally occurring bodies of water like ponds and lakes, providing water that is clean, clear, and purified the way nature intended—with aquatic plants, beneficial bacteria, and helpful microbes.

### The Outcome

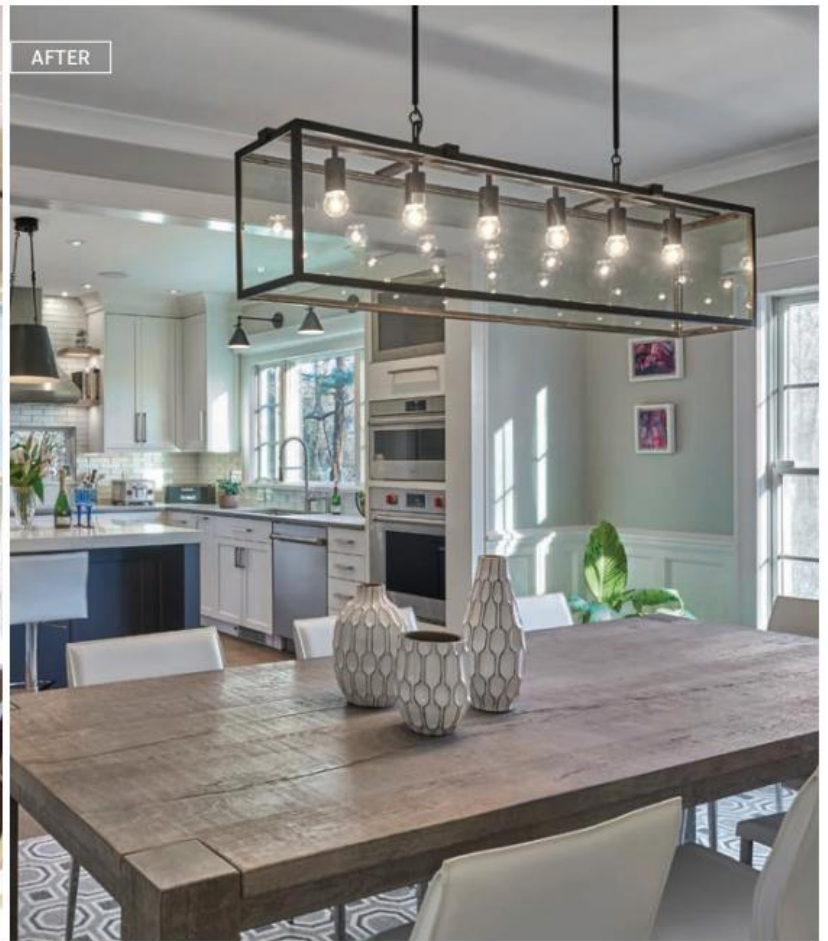
With a broad range of design options for these natural pools, from traditional rectangular-shaped pools to completely naturalistic swim ponds, the design possibilities are limitless. Natural pools are self-sustaining and require minimal upkeep. This pool was designed in a pond-like style, and attracts wildlife just as fresh water does in nature. Plants filter the water and add a serene quality. The goal was achieved.



FREDDY MIRABALLES

**Freddy & Co. and BioNova®**  
**Natural Swimming Pools**  
 40 Belmont Street  
 Fairfield, CT 06824  
 Greenwich, CT 06830  
 203-855-7854  
 freddyandco.net





# Front Row Kitchens, Inc.



## Front Row Kitchens

**Front Row Kitchens, Inc**  
 117 New Canaan Avenue  
 Norwalk, CT 06850  
 203-849-0302  
 frontrowkitchens.com



MATT GIARDINA

**“A New  
 Home for  
 Dory!”**

### **The Backstory:**

An active family with middle and high school-age children was looking to update a 40-year-old floor plan for daily living and entertaining groups of friends. Included in the design was a new custom-made saltwater fish tank...a new home for Dory!

### **The Challenge:**

Improving the flow of the first-floor living space, which included the kitchen, dining room, family room, and office, was a priority. An additional goal was creating a connection to the outdoor pool deck.

### **The Result:**

The biggest change was eliminating the wall between the kitchen and dining room, allowing room for a large seated island that the whole family could gather around. Enlarging the openings between the other rooms totally transformed the home, and Dory's new 250-gallon aquarium can be viewed from anywhere on the first floor.





# Michael Smith Architects, LLC



MICHAEL  
SMITH  
ARCHITECTS

**Michael Smith Architects, LLC**  
41 North Main Street  
Suite 101  
Norwalk, CT 06854  
203-563-0553  
michaelsmitharchitects.com



MICHAEL SMITH

**The Goal:**

The goal of this renovation project was to take a 1950s ranch structure and create a modern, updated, and expanded home for a young but growing family. The owners wanted to keep a more traditional shingle-and-stone exterior with an eclectic interior that includes a few midcentury modern-inspired touches. They also wanted considerably more natural light as the existing home was very dark.

**The Challenge:**

The challenge on this project was to create additional space without being able to expand the footprint of the house. Located on a smaller site, the house had significant zoning restrictions that limited expansion possibilities. It was also in very bad condition, but a “teardown” was not possible due to the impact of the zoning constraints.

**The Solution:**

The solution was to expand the house up and down. The walkout basement was maximized and turned into a playroom, billiard room, and laundry room, while the second floor was expanded out to match the footprint of the first floor below. This allowed for a new master suite and three bedrooms for the kids. To deal with the relative “boxiness” of the house, we used the American Foursquare style as inspiration and added a small wraparound porch and a new hip roof.



# Patricia M. Miller Residential Design, LLC



“Pat’s design skills are matched by her sensitivity to each client’s needs and requirements.”



PATRICIA M. MILLER

Patricia M. Miller  
Residential Design LLC

**Patricia M. Miller**  
**Residential Design, LLC**  
318 Good Hill Road  
Weston, CT 06883  
203-227-7333  
pmmarch.com

#### The Wish:

To renovate a home is to bring it a new life filled with beauty, warmth, activity, function, and love. The goal was to raise the structure to be FEMA compliant, capture the beautiful views of the Sound, open the floor plan to bring in as much light and openness as possible, and incorporate decks on both the second floor and the roof.

#### Wish Granted:

The house fulfilled the client’s every wish, including the rooftop deck, the lookout to the Sound.

Special Advertising Section



# Robert A. Cardello Architects



**“Designing custom homes is both a privilege and a pleasure. RAC is committed to making the design process an enjoyable collaboration which celebrates the union of form and function.”**

—Robert Cardello



ROBERT A. CARDELLO &  
DAVID A. LAPIERRE



**Robert A. Cardello Architects**

60 Post Road West  
Westport, CT 06880  
&

6 West Putnam Avenue  
Greenwich, CT 06830  
203-853-2524

cardelloarchitects.com

### **The Challenge:**

This oceanfront house offered spectacular views that were not fully captured, even after an extensive renovation in the '60s. Our client wanted to take better advantage of the coastal location and lighten up the interior.

### **The Must-Haves:**

A more welcoming entrance as you approach from the long driveway was essential. An abundance of glass was incorporated, allowing the natural light to brighten the entryway and every living space.

### **The Summary:**

As with many older houses, the interior was compartmentalized with walls, stairs, and heavy furnishings blocking the view from many of the separated living spaces. The renovation provides a more open first-floor plan, and large expanses of glass around the exterior allow the breathtaking 180-degree view to be an integral part of the home.



# Robert Dean Architects



“We literally turned this house inside out, creatively reimagining every space and surface.”



ROBERT DEAN

**ROBERT DEAN  
ARCHITECTS**  
ROBERT BRUCE DEAN, AIA

**Robert Dean Architects**  
111 Cherry Street  
New Canaan, CT 06840  
203-966-8333  
robertdeanarchitects.com

### The Goal:

For a client who had recently arrived from the Bay Area, we brought a light, airy, California-beach-house vibe to a tired waterfront home in Old Greenwich.

### The Challenge:

The challenge was to maintain the existing building footprint to comply with local zoning regulations, while raising the house up by 3½ feet and completely transforming and updating it.

### The Must-Haves:

To have some tall spaces, to have sunlight penetrate throughout the house, to see the view from every room, and to achieve an informal sense of elegance.

### The Summary:

Without adding square footage, we gutted and reconfigured the house. We turned a dark, cramped interior into one flooded with natural light; the rooms now open to each other and to the view.



---

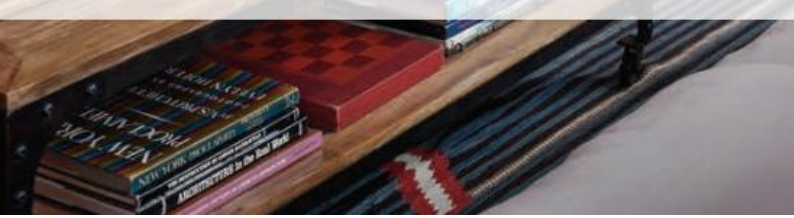
# GARRETT WILSON

---

## BUILDERS

---

119 POST ROAD | FAIRFIELD, CT 06824 | 203-259-3333 | [GARRETTWILSONBUILDERS.COM](http://GARRETTWILSONBUILDERS.COM)





# FEATURES

SUMMER 2020



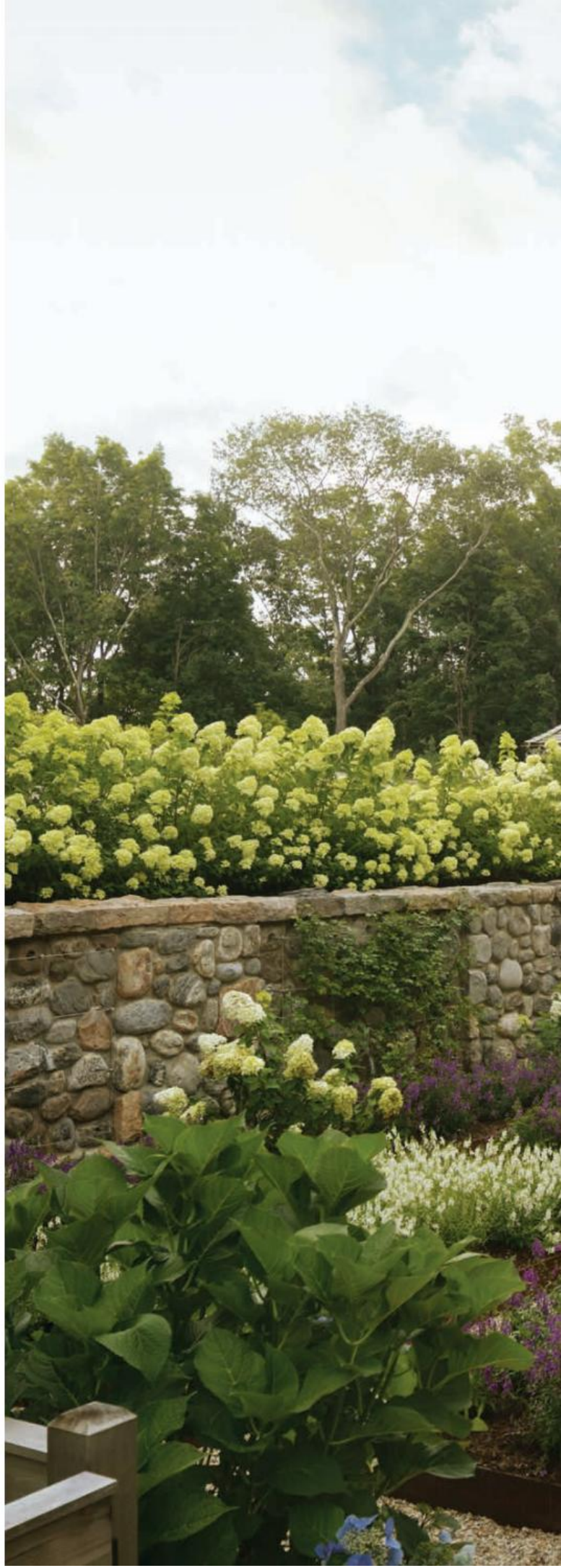
Backyard dining season has arrived. At designer Nancy Monahan's Southport cottage, it's as easy as heirloom tomatoes and a bottle of French rosé. See page 130.

# ROLLING WITH THE ROCKS

OUTDOOR SETTINGS  
SHIFT FROM ACTIVE PLAY  
SPACES TO QUIET  
WOODLANDS AT THIS  
LEDGE-FILLED RURAL  
RETREAT.

*Text by* MEAGHAN O'NEILL

*Photography by* DURSTON SAYLOR,  
MARLENE PIXLEY, AND NEIL LANDINO



At a property in Redding, Janice Parker Landscape Architects created a living space defined by a fieldstone wall and little lime hydrangeas; their organic shapes and textures balance more structured elements of the house and landscape. Raised beds with Corten steel frames are planted with sedum and salvia.



**RIGHT:** A terraced ledge planted with Tardiva hydrangeas, which Parker lovingly describes as "shaggy dogs," overlooks the pool house and infinity pool. Natural variation in the ledge-filled landscape and multiple buildings allowed Parker to design a variety of outdoor spaces for the active family, but also required solid discipline and organization to align her design along the axial lines of the main house. **LEFT:** Espaliered apple trees grow in the fenced-in cutting and vegetable garden.



A February storm had just dumped two or so feet of snow across Redding when landscape architect Janice Parker first visited the eight-acre property that would soon become her clients' new home. With no existing roadway available for navigation, Parker relied on the topography of the



*“AS LONG AS  
WE SET  
THINGS UP  
WELL,  
MOTHER  
NATURE DOES  
THE REST OF  
THE WORK.”  
—JANICE  
PARKER,  
LANDSCAPE  
ARCHITECT*

place—with its ledges and rock outcroppings—to orient herself and her ideas about how to best shape it.

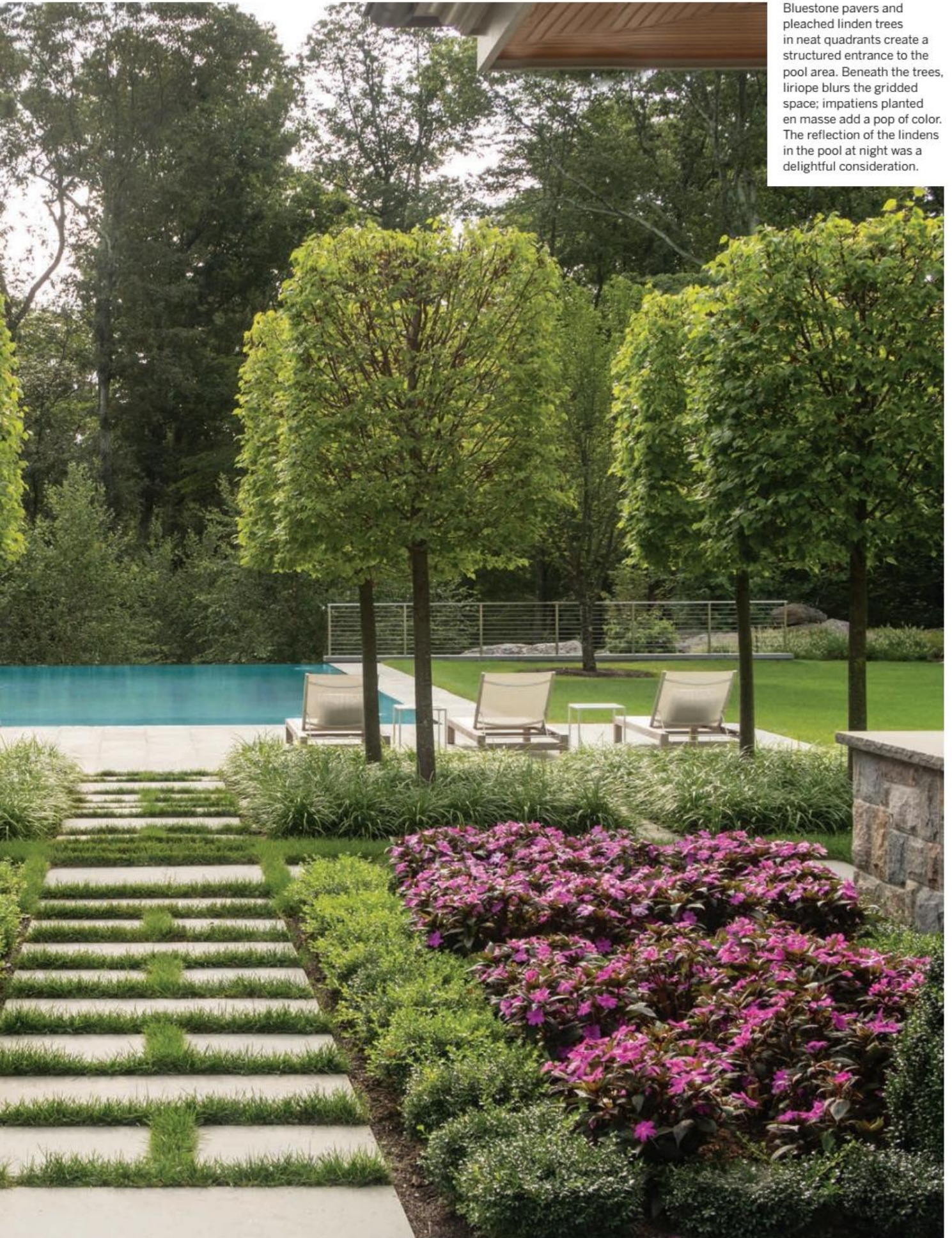
Having already owned the undeveloped property for many years, the husband-and-wife clients knew that they wanted to retain its rural character and “pristine magical woodlands,” as Parker describes it. But they also needed a contemporary landscape that would connect their soon-to-be-built home—designed by Shope Reno Wharton architects—with surrounding natural and recreational spaces for their active adolescent kids. A guest house and pool house, multiple outdoor living spaces, an infinity pool, outdoor spa, and a basketball court were all on the docket. “The idea was to have a ball outside,” says Parker, who is principal of Janice Parker Landscape Architects. “Activity is driving the landscape in a very big way.”

“Because we had multiple buildings, we had an opportunity to make some beautiful outdoor rooms,” says Arthur C. Hanlon, principal at Shope Reno Wharton. Parker and Hanlon’s visions for the



Photograph by Durston Saylor

Bluestone pavers and pleached linden trees in neat quadrants create a structured entrance to the pool area. Beneath the trees, liriope blurs the gridded space; impatiens planted en masse add a pop of color. The reflection of the lindens in the pool at night was a delightful consideration.









**LEFT:** Lounges and pavers mimic the shape of the infinity pool, adding to a sense of calm and orderliness, while lirioppe and hydrangeas soften the space. Parker also planted various trees of differing heights throughout the property to blur the border between the domesticated landscape and woodlands beyond. **RIGHT:** The spa was sited away from the pool area for privacy and quietude, designating it as a space for adults.



property were aligned from the start, but execution was complex. While the rocky topography gave the landscape beautiful contour and character, it also presented challenges. Blasting rock to build the 10,000-square-foot residence was an arduous task for the architects, who wanted to minimize impact; removing trees was also done with great care. “The clients didn’t want to lose the essence of this property,” says Hanlon.

For Parker, working along the axial lines of the house while embracing existing natural features meant working with the landscape, not against it,

which required precision planning. “When you hit ledge,” says the designer, “you have to be very disciplined and organized.”

Evoking the property’s agrarian heritage, she employed grids and structure in some spaces, such as the pool area’s pleached linden trees and an outdoor living area with raised beds and espaliered trees. Where the domesticated landscape meets the existing woodland, however, Parker softened boundaries with panicum grasses and grass-like carex. The result is an aesthetic that shifts from polished to natural with impeccable subtlety.

*“BECAUSE WE HAD MULTIPLE BUILDINGS, WE HAD AN OPPORTUNITY TO MAKE SOME BEAUTIFUL OUTDOOR ROOMS.”*  
—ARTHUR C. HANLON, ARCHITECT



**LANDSCAPE DESIGN:**  
Janice Parker, Ann Schmitt,  
Janice Parker Landscape Architects  
**ARCHITECTURE:** Arthur C. Hanlon,  
Joseph Goncalves, Shope Reno Wharton  
**BUILDER:** Max Soper, Maxwell Associates

That same dynamic relationship was manifested between buildings and outdoor settings, too. “The edge of the woods is having a conversation with the house,” says Hanlon, pointing to a beautiful corner porch that “trails off quietly” into the landscape beyond.

Parker’s deft mashup of plantings and hardscape materials creates cohesion across the property, too. Limelight and little lime hydrangeas, maple and hawthorn trees, and sedums, for example, carry a sophisticated and calm tonal palette across diverse spaces; occasional pops of color come from perennials planted en masse. Bluestone and rough fieldstone add structure and depth while connecting to the organic shapes and scale of the outcroppings throughout.

Parker’s achievement is a tribute to her experience and knowledge, but also to her intuition—she considers plants for their personalities as much as for their colors, textures, and shapes. She is meticulous and soulful, but also humble about her hand in the design: “As long as we set things up well, Mother Nature does the rest of the work.”

**EDITOR’S NOTE:** For details about this project, see *Resources*.



A porch corner drifts into the woodland landscape; switch grass and a hawthorn tree ease the transition between the residence's redesigned and existing natural landscapes. **FACING PAGE, TOP:** For a wall that supports a ledge, the designer chose rough natural fieldstone for its visual interest. **FACING PAGE, BOTTOM:** Lush fountain grass and a weeping Japanese maple soften a pathway through the garden. "There's never a wrong moment for a Japanese maple. They are gentle, agreeable souls," says Parker.





A mixed-media diptych by pop artist Jenn Lewis takes centerstage in the dining room, painted Benjamin Moore Revere Pewter, in this modern farmhouse. Interior designer Kimberly Handler says, "The piece includes newsprint, duct tape, a little bit of everything. The longer you look, the more things you find."



# *With A Twist*

A MODERN FAMILY HOME  
IN GREENWICH REVELS IN  
THE UNEXPECTED.

*Text by* MARNI ELYSE KATZ

*Photography by* JANE BEILES

**J**im Gardiner builds precisely and pristinely. "I create a canvas for the owners and designers," he says. "I love to see their vision especially when they take risks with the design." The Schurs, a young family of four who purchased a modern farmhouse in Greenwich from Gardiner's firm, CLT Development, most certainly did. Interior designer Kimberly Handler, whose own homes





**ABOVE:** The porch runs along the front of the house and wraps around one side. **LEFT:** The scheme for the entry started with the stair runner by Prestige Mills, which inspired the color choice for the chest, Benjamin Moore Champion Cobalt. The Urban Electric Company lantern ties the black door to the handrail. "If it were up to me, every room would have some black," Handler says. "It's classic and dramatic." The photograph over the mantel in the lounge is by Fairfield County-based artist Allyson Monson.

Jessica Schur describes as "magical and enchanting," made it happen.

With two kids, Schur stressed that every room have a purpose and none be "no-touch." But practicality and warmth would not be enough. She also insisted on fun. Handler responded by creating neutral backdrops upon which she imposed drama. "I like to mix modern with traditional," she says. "Each room has an unexpected twist."

Handler often uses color to invigorate a scheme. In the entry, a repurposed chest got a zippy makeover with an amped-up shade of blue pulled from the animal-print runner on the stairs. The rug itself, a departure from Schur's usual taste, also infuses fun. "I'm not an animal-print person, but I love the abstract pattern of this rug," she says.

Chartreuse is the star in the lounge.



*“I like to mix MODERN with TRADITIONAL,” says interior designer Kimberly Handler. “EACH ROOM has an UNEXPECTED TWIST.”*



Acid-green grasscloth backs the bookshelves, adding depth to the monochromatic space. “There was a lot of gray in here,” Handler says. The custom-lacquered backgammon table from Oomph is another hit of the hue. “Jessica’s husband didn’t care what color it was, as long as he had a table, so everyone was happy,” the designer says.

Pattern plays a primary role for zhuzhing up the dining room. “On first impression, the room reads very neutral; nothing seems wild,” Handler says. Until you step in and gaze upwards. Handler lined the ceiling with raffia wallcovering in an eggplant-and-gray chevron. Double chandeliers heighten the effect. “You





**CLOCKWISE FROM FAR LEFT:** The Mitchell Gold + Bob Williams velvet sectional in the family room is comfortable, durable, and perfect for lounging; the horizontal muntins on the doors to the patio echo the sidelights in the front entry. The brass-capped acrylic stools around the kitchen island are by Interlude Home, and the roman shade fabric is from Thibaut. The bar, which connects the lounge to the family room, has a mosaic marble-and-metal backsplash by Akdo.

don't initially notice that there are two—you need to look up for the excitement," she says.

Vintage furnishings are a quieter but key ingredient. The klismos dining chairs, reupholstered in crocodile-stamped aubergine velvet, create a staunch tension around the minimalist burlwood table. Upstairs in the main bath, an antique curule bench adds softness and age against the highly polished marble floor. And in the guest room, pieces with French country appeal are a foil for punchy mod drapes. "I love nothing more than bringing in vintage pieces," Handler says. "It could be something from the 1950s or a Chinese





**ABOVE:** Drapery in a dotted stripe pattern from Schumacher adds a graphic burst of green to the guest room. The chest and chair are from local antique shops. **BELOW:** The blue cushion on the antique stool in the main bathroom inspired the choice for the spotted Schumacher fabric used for the roman shade. **FACING PAGE:** Handler balanced masculine and feminine sensibilities in the main bedroom. The painting by Cameron Schmitz was purchased at The Drawing Room in Cos Cob.



antique. It doesn't matter, as long as it's different."

Contrasting materials also make effective juxtapositions. In the main bedroom, a gilded pendant offers statement-making glam compared to the sweater-like wool rug and homey rattan dresser repainted powder blue. Throughout the house, brass hardware elevates traditional tableaux to downright sexy. Without it, the classic white kitchen would be just that—a classic white kitchen. Handler pushes it even further by adding acrylic counter stools for a midcentury-meets-Hollywood-Regency flair.

Schur collaborated with Handler at every turn. "I'd tell her, 'I have a crazy idea,'" the designer recalls. "Jess would look at me like I was nuts, and then say, 'I love it!'"

**EDITOR'S NOTE:** For details about this home, see Resources.

**INTERIOR DESIGN:** Kimberly Handler, Kimberly Handler Designs

**ARCHITECTURE:** Marc G. Andre, Marc G. Andre Architects

**BUILDER:** Jim Gardiner, CLT Development

*In the MAIN BEDROOM,  
a gilded pendant offers statement-making  
GLAM compared to the SWEATER-  
LIKE wool rug and HOMEY  
RATTAN dresser painted powder blue.*



To reflect the curved gates to the entry courtyard that doubles as a dining area, homeowner and designer Nancy Monahan installed a bluestone pathway. The weathered brick pillars exemplify her respect for the past. **FACING PAGE:** Monahan increased light by using large glass panes in the entry foyer. An idiosyncratic collector, she displays finds such as carved pillars originally from a Boston bank beside a wooden horse torso on a metal table.





# Keep it Light

A dark 1940s Southport cottage gets the enlightenment it deserves—and then some.

*Text by TOVAH MARTIN | Photography by MICHAEL PARTENIO | Produced by KARIN LIDBECK BRENT*





In the living room, Monahan cleverly crafted the windows to appear larger without changing their exterior dimensions by adding a bank of mirrors above the panes. To make a sisal rug pop, she layered a cowhide rug beneath overlapping glass sectional coffee tables. The wall displays the ethereal lines in a pair of works by up-and-coming Connecticut artist Tracie Cheng, while furniture is comfy but sleek.

A series of molding-framed murals by Susan Harter could easily steal the scene in the dining room. Instead, Monahan selected the calming earth tones of grisaille, letting her mahogany dining table and antique chairs stand out. A chandelier from Arteriors accents a custom-finish ceiling painted by Deux Femmes Decorative Art. **RIGHT:** On the table, in lieu of a centerpiece, mercury glass containers from Monahan's daughter's wedding cradle sedums.







**N**ancy Monahan bought the house that really needed her. But then, she has a history of coming to the rescue. This is her sixth personal renovation—and that's not counting all the fixes orchestrated for clients. A serial rehabilitator,

*EACH ROOM BEGS YOU TO LINGER, SIT, AND ADMIRE COLLECTIONS OF ARTWORK AND ANTIQUES MINGLED WITH SAMPLINGS FROM NATURE.*



she found the Southport harborside historic district cottage two years ago and didn't balk at the updates necessary to bring a dated, drab domain into the present with panache. Where everyone else was spooked by the cramped half-acre lot on a busy street with no exterior remodeling permitted, she rolled up her sleeves and went to work.

The courtyard contained within privacy gates was the feature that spoke to

Monahan upfront. She'd been working in design for thirty years "as a side hustle" beyond her real job in biotech before officially launching Greystone Statement Interiors and then totally transitioning into design/project management a year ago. Thanks to that training and experience, historic district restrictions forbidding exterior remodeling were no problem for Monahan. In fact, the courtyard served as inspiration to create an indoor/



A Saarinen table below a pendant lamp by Arteriors can accommodate many for breakfast thanks to the banquette seating. **LEFT:** The kitchen needed a complete revamp with the exception of the numerous casement windows, which make the homeowners “feel like we’re eating outdoors.” Monahan went for a seven-foot island with stools sitting on a vinyl floor mat by Beija Flor.



**INTERIOR DESIGN AND ARCHITECTURE:** Nancy Monahan, Greystone Statement Interiors  
**BUILDER:** Tomasz Czaja, T&R Construction  
**INTERIOR PAINT:** Deux Femmes Decorative Art

outdoor story line as it flows through a house redesigned to increase light without expanding windows. Sounds like a breeze, but it was actually quite the feat of magic. Hint: mirrors were involved.

The mirrors were a little trick that Monahan devised to give the illusion that a set of extant windows appear floor to ceiling in the living room. Plus, she knocked down some interior walls to let

the sunshine in. The resulting living experience is luminous and exhilarating, starting with a generous dining table in the front courtyard, moving through a classical entry foyer and window-generous downstairs, to a comfy seating area and fire table in the backyard. Along the way, each room begs you to linger, sit, and admire collections of artwork and antiques mingled with samplings from

*“I WANTED A CURATED  
LOOK IN THE HOUSE, BUT NOT  
A SHOWROOM,” EXPLAINS  
HOMEOWNER AND INTERIOR  
DESIGNER NANCY MONAHAN.*

After dinner, the Monahans retire to an informal upstairs sitting room with comfy faux sheepskin chairs lit by a unique layered lighting fixture found in Soho. **LEFT:** Deux Femmes Decorative Art custom applied a textural linen-like finish to the wall and molded ceiling in the main bedroom. For art, Monahan framed a favorite Tiffany scarf.



nature. Textural elements are explored. Eras from classical to modern are juggled with the greatest of ease. “I wanted a curated look in the house, but not a showroom,” Monahan explains. Of course, she relocated cherished items from past homes, “but 60 percent of the living room, for example, is unique to this house.” Clearly, this is the carefully studied work of a professional, however, the inclusion of nature keeps it light.

If there is a style, “layered serenity” pretty much sums it up. And it’s not just



**RIGHT:** Convenient to the kitchen (the house is L-shaped), alfresco dining is as easy as setting the table with mozzarella, tomatoes, and basil. **BELOW:** An urn from Terrain was given its own pocket garden in the front courtyard where a dining table waits to entertain company. **FACING PAGE:** Nancy Monahan enjoys a glass of wine with Boca, her Havanese, in the backyard, where a fire table expands the seasons and ceramic stools allow seating for several guests.



about the furnishings or what’s hanging on the walls. Art is inlaid into the ambience. Susan Harter, a Boston-turned-Washington-based muralist who Monahan found while resource gathering, adapted a series of bucolic panels for the dining room. And yet, the custom installation doesn’t call attention to itself because Monahan opted for a muted, ethereal grisaille version, letting her dark mahogany dining room table and chairs stand out. She also hired locally based Deux Femmes Decorative Art custom painters to create a raw silk finish on the ceiling—a trick she echoed for the bedroom walls.

No surprise, attention to detail just happens to be Monahan’s specialty. You feel it in the preserved hardware on the old wood doors and the pocket planting created to frame an urn. Asked what drew her to adopt the Southport project, Nancy Monahan points to the gate pillars. “See the weathered painted brick? That blend of old with new patinas is what I love.”

**EDITOR’S NOTE:** For details about this home, see *Resources*.



**KITCHENS WE LOVE:  
LET THERE BE LIGHT**

**COUNTRY COMFORT  
PAGES 33-34**

**Interior design:** Rebecca Reynolds, Rebecca Reynolds Design/New Canaan Kitchens, 203-972-8300, [rebeccareynoldsdesign.com](mailto:rebeccareynoldsdesign.com)

**Builder:** Seri Bueti, Bueti Construction, 203-957-9917, [seribueticconstruction.com](mailto:seribueticconstruction.com)

**STATION TO STATION  
PAGE 36**

**Architecture:** Ken Andersen, Granoff Architects, 203-625-9460, [granoffarchitects.com](mailto:granoffarchitects.com)

**Interior design, kitchen design, builder:** Kristina Larson, 212-838-7699, [kristinalarsonllc.com](mailto:kristinalarsonllc.com)

**Interior millwork:** Carlos Valladares, Valladares Carpentry

**Cabinetry:** Greenfield Cabinetry, 800-999-7606, [greenfieldcabinetry.com](mailto:greenfieldcabinetry.com)

**CUSTOMER (SELF-) SATISFACTION  
PAGE 38**

**Architecture:** Teo Sigüenza, 914-234-6289, [teosiguenza.com](mailto:teosiguenza.com)

**Interior design:** Emily Fuhrman, Sage & Ginger, 203-594-9862, [sageandginger.com](mailto:sageandginger.com)

**Builder:** Matos Andrade, Andrade Construction, 203-302-8477

**Cabinetry:** Minzner & Company, 610-258-5449, [minzner.com](mailto:minzner.com)

**GENERATIONAL SHIFT  
PAGES 40-42**

**Architecture and interior design:** Stacy Millman, SKM Design, 917-887-4282, [skmdesignllc.com](mailto:skmdesignllc.com)

**Builder:** Bruce Daigle, Daigle & Son, 860-677-9411, [daigleson.com](mailto:daigleson.com)

**Cabinetry:** Heartwood Cabinetry, 860-467-2049, [heartwoodcab.com](mailto:heartwoodcab.com)

**PAST PERFECT:  
UNCHARTED WATERS  
PAGES 58-60**

**Architecture:** Dodaro Architects, 203-637-7530

**Builder:** Redwood Construction, 203-653-9105, [redwoodconsultingco.com](mailto:redwoodconsultingco.com)

**Landscape design:** Rosalia Sanni, Rosalia Sanni Design, 203-918-4619, [rosaliasanni.com](mailto:rosaliasanni.com)

**Restoration consultation:** Greenwich Point Conservancy, 203-637-3400, [greenwichpoint.org](mailto:greenwichpoint.org)

**Garden planting:** Gro Pro Landscaping, 203-637-2004, [groprogardens.com](mailto:groprogardens.com)

**SPECIAL SPACES:  
WET FOOTPRINTS STOP HERE  
PAGES 72-74**

**Architecture:** Mike Cusato, Cusato

Architecture, 203-395-4663, [cusatoarchitecture.com](mailto:cusatoarchitecture.com)

**Interior design:** Denise Davies, D2 Interieurs, 646-326-7048, [d2interieurs.com](mailto:d2interieurs.com)

**Builder:** West Construction, 203-966-7918, [westconstructioncorp.com](mailto:westconstructioncorp.com)

**Landscape design:** Jennifer Anderson Design & Development, 203-834-9666, [jenniferanderson-designs.com](mailto:jenniferanderson-designs.com)

**ROLLING WITH THE ROCKS  
PAGES 112-121**

**Architecture:** Arthur C. Hanlon, Joseph Goncalves, Shope Reno Wharton, 203-852-7250, [shoperenowharton.com](mailto:shoperenowharton.com)

**Builder:** Max Soper, Maxwell Associates, 203-254-0032, [maxwellassociatesinc.com](mailto:maxwellassociatesinc.com)

**Landscape design:** Janice Parker, Ann Schmitt, Janice Parker Landscape Architects, 203-340-2824/212-929-6490, [janiceparker.com](mailto:janiceparker.com)

**Landscape contractor:** Kuczo Tree and Lawn Care, 203-762-0403, [kuczotreeandlawn.com](mailto:kuczotreeandlawn.com)

**Pool design:** Meehan and Ramos Pools, 203-378-8900, [meehanramos.com](mailto:meehanramos.com)

**Masonry:** Costa's Masonry, 978-208-8052, [costasmasonry.com](mailto:costasmasonry.com)

**WITH A TWIST  
PAGES 122-129**

**Architecture:** Marc G. Andre, Marc G. Andre Architects, 203-979-0589, [mgandregroup.com](mailto:mgandregroup.com)

**Interior design:** Kimberly Handler, Kimberly Handler Designs, 203-340-9213, [kimberlyhandlerdesigns.com](mailto:kimberlyhandlerdesigns.com)

**Builder:** Jim Gardiner, CLT Development, 646-256-3199, [cltdh.com](mailto:cltdh.com)

**Kitchen and bathroom design:** Iris Michaels, Karen Berkemeyer Home, 203-454-0032, [karenberkemeyerhome.com](mailto:karenberkemeyerhome.com)

**Upholstery and window coverings:** AC Designs, 914-358-4520, [acdesignslltd.com](mailto:acdesignslltd.com)

**KEEP IT LIGHT  
PAGES 130-141**

**Interior design and landscape design:** Nancy Monahan, Greystone Statement Interiors, 203-913-1420, [greystonestatements.com](mailto:greystonestatements.com)

**Builder and interior millwork:** Tomasz Czaja, T&R Construction, 203-520-3383

**Kitchen designer:** Julie Heussner, Domestic Kitchens, 203-418-7065, [domestickitchens.com](mailto:domestickitchens.com)

**Cabinetry:** Domestic Kitchens, 203-418-7065, [domestickitchens.com](mailto:domestickitchens.com)

**Decorative painting:** Deux Femmes Decorative Art and Design, 203-545-1995, [dfemmes.com](mailto:dfemmes.com)

## Ad Index

A-List Design **23**

Acorn Deck House Company **55**

Advanced Home Audio **37**

AIA Connecticut **75-77**

Artemis Landscape Architects **8-9**

Austin Ganim Landscape Design, LLC **88-89**

Bender **47, 49, 83**

Beth Krupa Interiors **90-91**

Brooks and Falotico Associates, LLP **39**

Charles Hilton Architects **6-7**

Chloe Winston Lighting Design **81**

Christensen Landscapes Services **92-93**

Christopher Pagliaro Architects **21**

City Bench **62**

Clarity Home Interiors **14-15**

Closet and Storage Concepts **26**

Connecticut Stone **94-95**

Cornerstone Contracting **16-17**

County TV & Appliance **53**

Crown Point Cabinetry **31**

Crown Select **51**

Daniel Conlon Architects **83**

Diane James Home **81**

Dina Spaidal Interiors **61**

Domus Constructors, LLC **96-97**

Eleish Van Breems **inside front cover**

Finished in Fabric, LLC **79**

Fletcher Development **59**

Freddy & Co. Fine Landscape Services **98-99**

Front Row Kitchens, Inc. **100-101**

Garrett Wilson Builders **110**

Gatehouse Partners **4-5**

Gault Stone & Landscape Supplies **25**

Heidi Holzer Design & Decorative Work **73**

Hobbs, Inc. **41**

Home Builders & Remodelers of Fairfield County **85**

Homefront Farmers, LLC **12-13**

Hometronics Lifestyles **43**

InnerSpace Electronics, Inc. **22**

Jan Hiltz Interiors, LLC **18**

JMKA | architects **inside back cover**



Karen Wells Design **73**  
 Karp Associates **86**  
 Kebabian's **143**  
 Kimberly Handler Designs **63**  
 L&M Custom Carpets and Rugs, LLC  
**outside back cover**  
 LDD Interiors **67**  
 League of N.H. Craftsmen **50**  
 Legacy Construction Northeast, LLC **35**  
 Maine Woodworks **65**  
 Mar Silver Design **27**  
 Mary Elizabeth Peterson Fine Art **81**  
 Matthew R. Dougherty Architect, LLC **32**  
 Michael Smith Architects **102-103**  
 Morgan Harrison Home **2-3**  
 Neil Hauck Architects, LLC **28**  
 Northeast Kitchen Center **71**  
 NuKitchens **10-11**  
 Patricia M. Miller Residential Design,  
 LLC **104-105**  
 ProSource of Stamford **30**  
 Rebecca Reynolds Design **45**  
 Redwood Construction and Consulting **65**  
 Robert A. Cardello Architects, LLC **106-107**  
 Robert Dean Architects **108-109**  
 Robert Sherwood Landscape Design **57**  
 Rosalia Sanni Design **71**  
 S&W Building Remodeling, Inc. **44**  
 Shope Reno Wharton **1**  
 Smarthome & Theater Systems **69**  
 The Linen Shop **62**  
 Tile America **57**  
 Torrco **29**  
 Tusk Home + Design **69**  
 Wagner Hodgson Landscape  
 Architecture **44**  
 Yankee Custom Builders **61**

New England Home Connecticut. Summer  
 2020 © 2020 by New England Home  
 Magazine, LLC. All rights reserved. Permission  
 to reprint or quote excerpts granted by  
 written request only. Editorial and advertising  
 office: New England Home Magazine, LLC,  
 530 Harrison Ave., Ste. 302, Boston, MA  
 02118, 617-938-3991.



*Good Vibes*



**Family. History. Passion. Style.**  
 QUALITY HANDMADE RUGS SINCE 1882

kebabians.com / 203.865.0567  
 73 Elm Street, Downtown New Haven



## Summer Love

Summer vacation might not look quite the same this year, but thanks to author Jennifer Ash Rudick and photographer Tria Giovan, you can get a glimpse inside more than twenty-five beachy abodes. *Summer to Summer: Houses by the Sea* (Vendome Press, \$75, June 2020) takes you up and down the East Coast from Long Island, New York, to Northeast Harbor, Maine, to tour homes designed by professionals well-known in the New England design community. A glass-and-birch home by Japanese-American artist Isamu Noguchi and architect Wallace K. Harrison (of Rockefeller Center and Lincoln Center fame), musician Carly Simon's Martha's

Vineyard farm, and the Dark Harbor, Maine, family home of Sister Parish that ran in *New England Home* in November–December 2019 are all featured. So are cottages previously owned by writers and artists, and Estée Lauder's former sanctuary.



Showcased architecture and interiors vary dramatically, which just proves there's more to the summer-home story than lobsters and sailboats.

—By Erika Ayn Finch



Architecture



Interiors



Landscape



Master Planning

Download our "Project Planning Packet" at [jmkarchitects.com](http://jmkarchitects.com)

# JMKA | architects

A-List Finalist  
HOBI Award Winner  
Innovation and Design Awards

Greenwich | Westport  
203.222.1222 | [jmkarchitects.com](http://jmkarchitects.com)





Claire Paquin | 914.725.0995  
cleandesignpartners.com

L&M  
custom carpets and rugs

gary@lmcustomcarpets.com | 201-951-0980  
lmcustomcarpets.com